

## How to change the motor print on the Aduro DraftOptimizer

**Difficulty level:** Intermediate

**Time consumption:** 45 minutes

**Tools:** PH2 screwdriver, M8 wrench, wire cutter

**Components:** Motor print kit

**NB: All changes and adjustments must be conducted when the stove is cold and when the stove and the Aduro DraftOptimizer is disconnected from the power supply.**

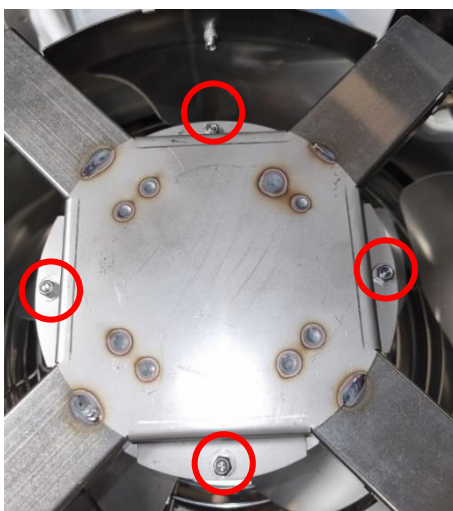
**This guide is designed for craftsmen. Any unauthorized work on the DraftOptimizer may result in loss of warranty.**

### Accessing the print

1. Remove the two screws holding the top plate in place:



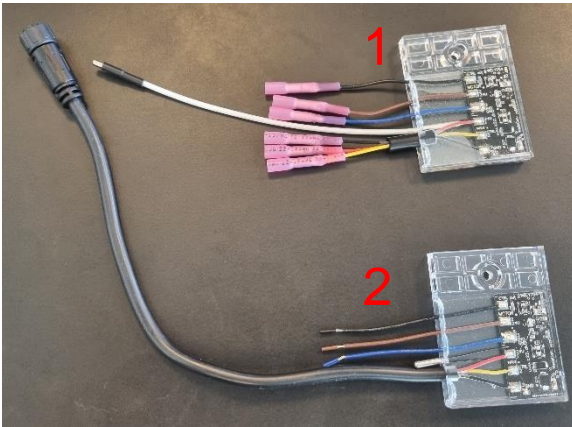
2. Remove the four nuts and lift off the cover:



3. Cut the cable ties and unscrew the screw on the control board. Then cut the wires with a wire cutter to remove the board.

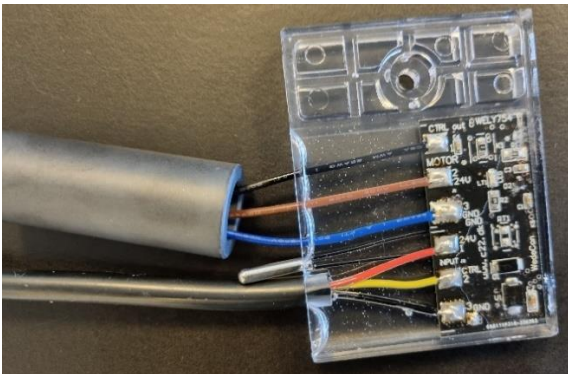


4. There are two versions of the control board:



The difference between these two are the bottom connector. On board 1, the cable has been split and each wire needs to be connected to the ones from the DraftOptimizer. On board 2, the connector simply needs to be replaced with the one in the DraftOptimizer while the three loose wires need to be connected to the ones from the control box.

5. Place the ferrite tube around the free cables on the new board.



6. Mount the new board, and connect the wires to the draft optimizer and the control box:



7. Remount the cover and top plate and test the DraftOptimizer to make sure it is functional.

### **Troubleshooting:**

If the DraftOptimizer is not working after replacing the print, please check the following:

- Check that the cable and wires are connected and isolated.
- Check the control box and make sure that the LEDs are lighting up.
- Check that the remote and stepless regulator are connected and lighting up.
- Check the power supply and make sure it is connected and that the LED is lighting up blue.