

Technical maintenance of Aduro P5 pellet stoves

Aduro P5 must be inspected within the first year by an Aduro certified professional for cleaning and adjustment. Hereafter, maintenance must be conducted every year from the date of the latest service visit. The chimney must be maintained and swept according to local regulations.

Servicing after 1 year

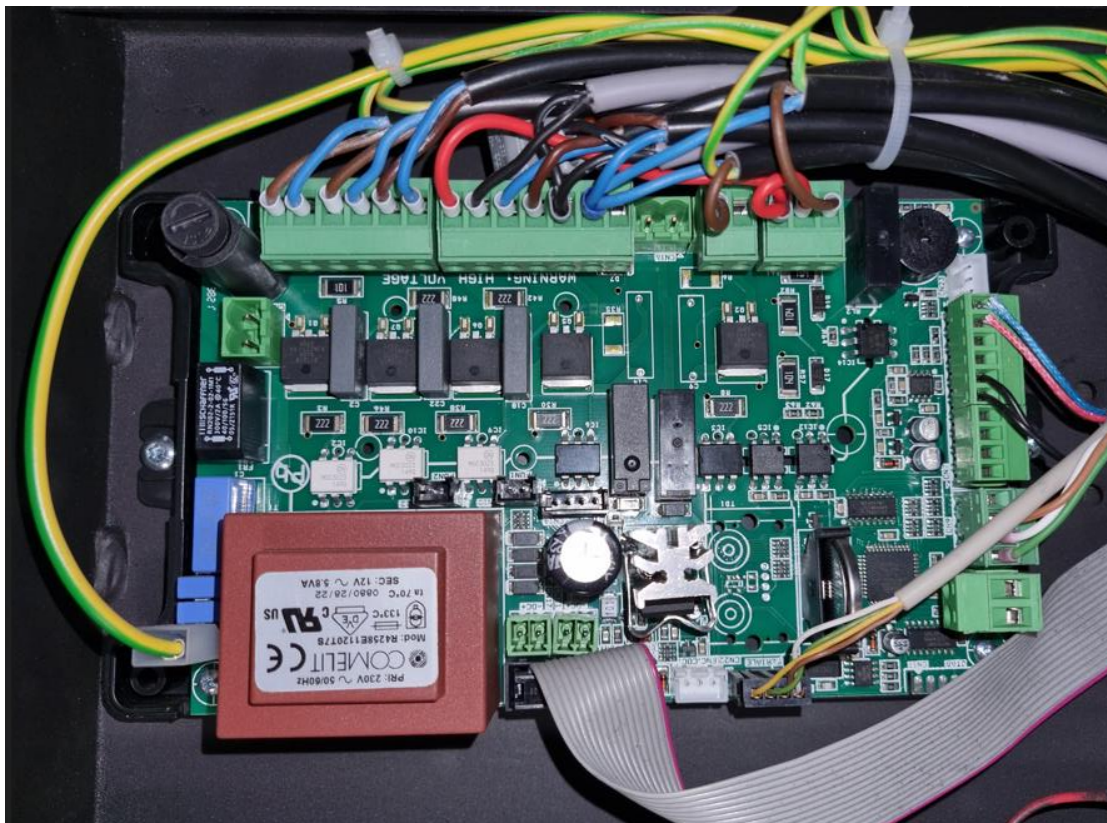
- Turn off the stove and allow it to cool completely - then disconnect it from the flue pipe.
- Check the flue pipes and smoke outlet for humidity. If any is present, wipe this away and check the pipes for any leakage and the other entranceways for humidity.
- Check for rust spots inside and outside on the stove. Sand down any rust spots to the bare metal, and spray paint the area to protect the metal.
- Remove the insulation stones and check that they are in good condition. Vacuum for ashes and clean the combustion chamber and the baffle plate in steel.
- Check that the brazier and cast-iron grate are placed correctly.
- Clean the brazier and cast-iron grate, and make sure the air pathways are free from ashes and cinders.
- Carefully remove the ceramic electrical igniter. Clean the hole to the ignitor to make sure air and heat can get through:



- Check the ceramic ignitor: if there are any ashes inside the white cylinder, clean it.
- Clean any build-up of hardened ash and cinders in the mouth of the auger tube.
- Check the gasket below the cast-iron grate. It must not be damaged and must be placed correctly.
- Remove the three service cover plates in the combustion chamber. Clean the stove air boxes through the service entrances:



- Check that the door is airtight and check that the door gaskets are placed correctly. Tighten the glass fittings.
- Check that the smoke extractor fan and convection fan is working properly.
- Check the temperature sensor is mounted correctly on the backside of the smoke extractor fan, and that it is covered with felt and a metal cover.
- Empty the pellet container and vacuum the bottom of the external auger through the opening in the pellet container, clean any pellet dust that might have accumulated here.
- Carefully remove the control board and clean it for dust using compressed air. Check the cables for damage and that all are connected correctly.



- Dismount the internal auger and vacuum it and the auger pipe. Clean the auger with a steel brush to remove soot and other deposits. Check that the O-ring is intact and clean the drop shaft.



- Check if there are scratches/marks on the pellet stove. If so, refresh the paint with [Aduro Spray](#).
- Check the pressure switch. The rubber hose must not have any damage and must be fitted correctly to the stove pressure tab and the sensor.

Control and adjustment

- Connect the stove to Wi-Fi through the customer's phone (if it is not already connected) by following [this guide](#).
- Check the customer's app version and update the app if necessary.
- Check that the door switch is functioning: Open and close the door to see if the app and stove display reacts.

Restart the stove and check the draft

- Fill both augers with pellets, until the pellets are visible below the brazier (about 1 cm below the edge of the tube for the internal auger).
- Perform an ignition to check that all other electronic parts are functioning. Check that the stove ignites correctly on the first attempt.
- If the draft is too low (due to a short chimney or bad chimney pipes), explain to the customer how the ignition and the draft can be improved: E.g., by using only [recommended pellets](#), installing an [Aduro DraftOptimizer](#), or extending the chimney.

Yearly service after the first service visit

- Conduct the same service as described for the first service visit.
- Check the number of ignitions and change the ceramic electrical igniter if there have been more than 4000 ignitions.
- After 2 years of use, dismount both the internal and external auger and check for "unusual" wear or noise. Follow Aduro's additional guides for replacing the augers and gear motors on doc.adurofire.com.

Additional instructions for cleaning and maintenance can be found in the manual at adurofire.com/download/user-manuals/ and at [Aduro Customer Service Center](#).