

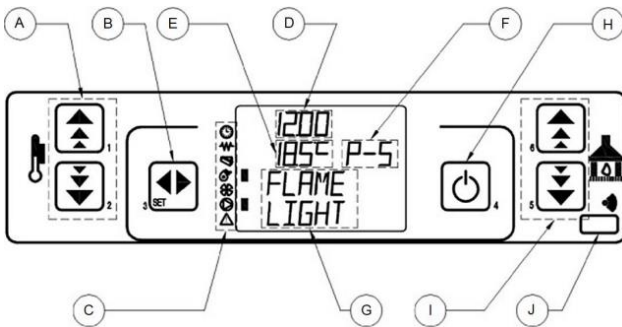
Adjustment of settings on Aduro pellet stoves

Difficulty level: Intermediate

NB: Any adjustment of the settings is on your own responsibility.

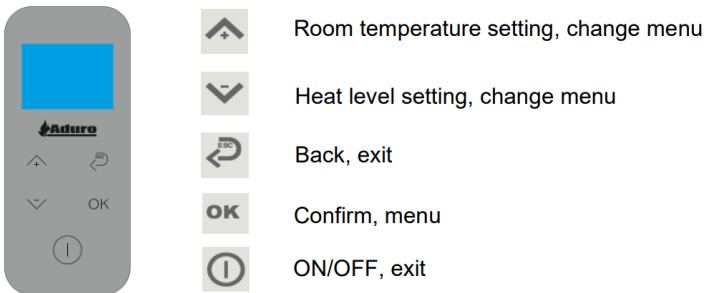
To adjust the settings on Aduro pellet stoves, you can use the stove's display or a remote control depending on which type of stove you have. See below. Some settings can also be adjusted in the Aduro Pellet App.

Aduro P1 and P4 – Display on stove



- | | |
|--|---|
| A. Temperature setting (buttons 1 and 2) | F. Modes of operation |
| B. Enter/SET (button 3) | G. Current status information |
| C. Indicators for single components | H. ON/OFF and Exit (button 4) |
| D. Clock display | I. Operation mode setting (buttons 5 and 6) |
| E. Room temperature display | J. Remote control receiver |

Aduro P5 series – Remote control



How to access the technical settings:

1. Access the main menu by pressing the “SET” button (button 3) on P1/P4 and the “OK” button on P5/P5 Lux.



2. Use the arrows (buttons 5/6) to navigate through the menu, until “Technical settings (08) / Settings technical” is reached.
3. Press SET / OK to access.
4. An access key will be required. Use the arrows (button 1/2) to navigate to the access key “A9”. Hold the arrow until you reach A9. Press SET / OK.
5. The technical settings menu (n-8/n-10) will now be displayed.



How to adjust the technical settings

Each menu contains settings related to the operation of the stove and can be accessed by pressing SET / OK.

The technical settings should be adjusted within the suggested limits shown in [this excel sheet](#).

The display on the Aduro P1/P4 will show the menu number corresponding to the one shown in the excel sheet. The P5 remote control will also show this when entering a menu:



Menu 8 - Technical Settings - Access Key: **A9**

Menu Level	Setting	Data Bank 00 concentric	Data Bank standard
n8-1	Pellet type		
n8-2	Chimney type		
n8-3	Bank data		
n8-4	General settings		
n8-4-01	Restart block	5 min	
n8-4-02	Fan min off	2 min	
n8-4-03	Preload ignition	60 sec	
n8-4-04	Waiting fire	60 sec	
n8-4-05	Fume fan preload	1850 rpm	1850 rpm
n8-4-06	Delta on off auto	1°C	

Menu 10 - Technical Settings - Access Key: **A8**

Setting menu	Menu Level	Setting	Data Bank standard
	M-10-5-17	EMPTYING AUGER 2	120
FACTORY SETTINGS	M-10-7-01	MINUTES TIME-OUT	0
	M-10-7-02	MINUTES START	5
	M-10-7-03	CADENCE CLEANING	120
	M-10-7-04	AUGER TURN ON	4
	M-10-7-05	EXT AUGER START	6
	M-10-7-06	EXT AUGER POWER P1	4,5
	M-10-7-07	EXT AUGER POWER P2	6
	M-10-7-08	EXT AUGER POWER P3	8
	M-10-7-09	EXT AUGER POWER P4	10

Navigation in the menu is a little different based on the stove model:

P1/P4: The buttons 5/6 are used to navigate through the different settings. The buttons 1/2 are used to adjust the value of the shown setting.

The ON/OFF button (button 4) is used to go back/exit the menu.

P5: The arrows are used to adjust the value of the given setting. The OK and ESC buttons are used to navigate between the settings.

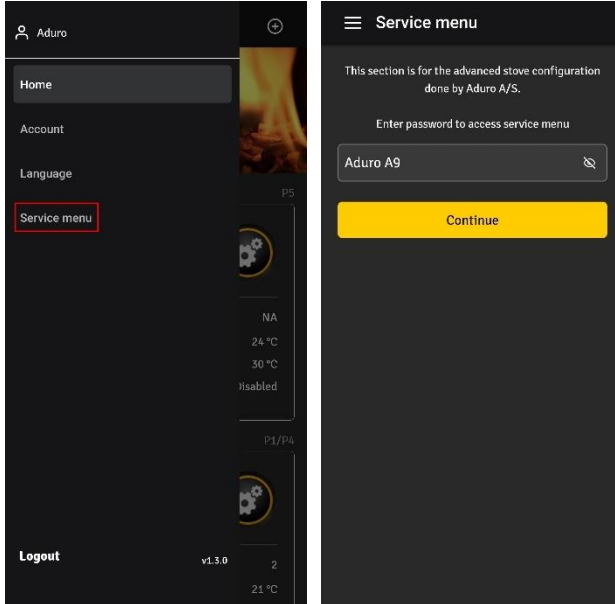
The ON/OFF button is used to go back/exit the menu.

When a value has been adjusted it will automatically save.

How to adjust the settings in the Aduro Pellet Stove App

A limited number of settings are also adjustable in the service menu in the Aduro Pellet Stove App. Adjust the settings according to the excel sheet mentioned above.

1. Access the menu by clicking the three lines in the upper corner, then select service menu. An access key will be required, insert "Aduro A9":



2. To adjust any setting, select a submenu, choose the value that is to be changed, insert the new value, and click "save":

