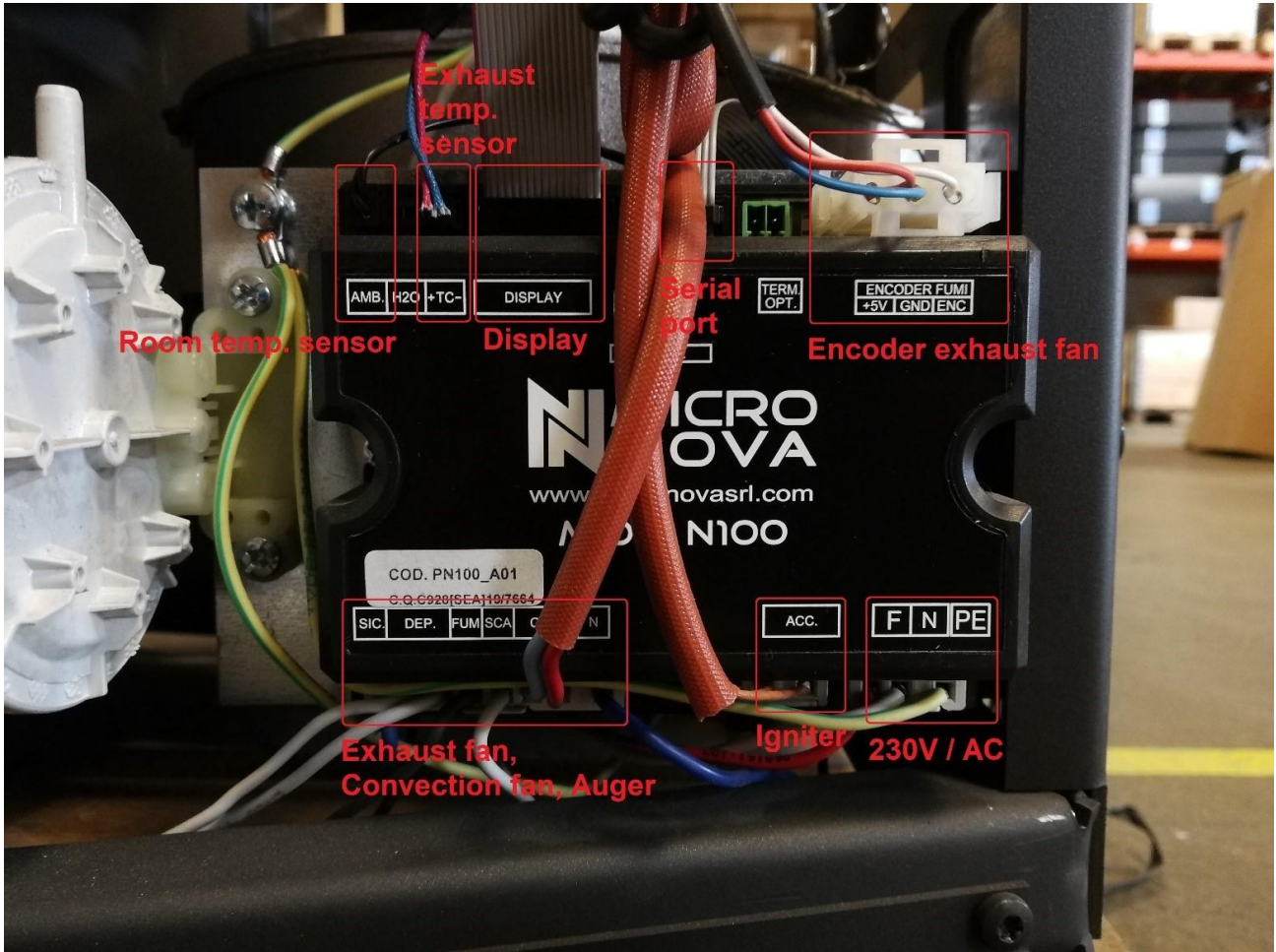


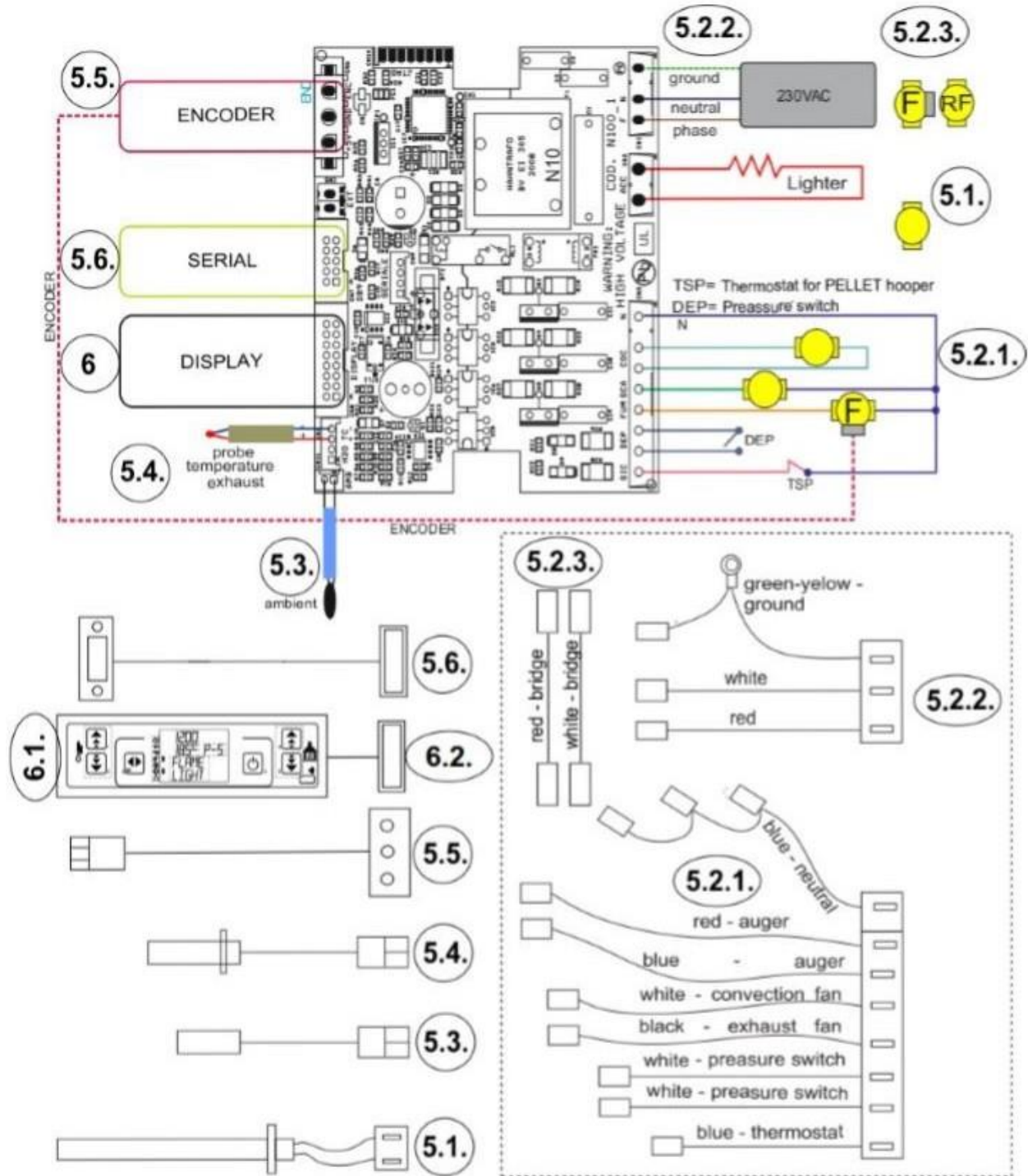
Electrical diagram and component overview of Aduro P1 and P4 pellet stoves

NB: This guide is recommended for professional craftsmen

Control board:



General schematic of the Micronova N100 control board:



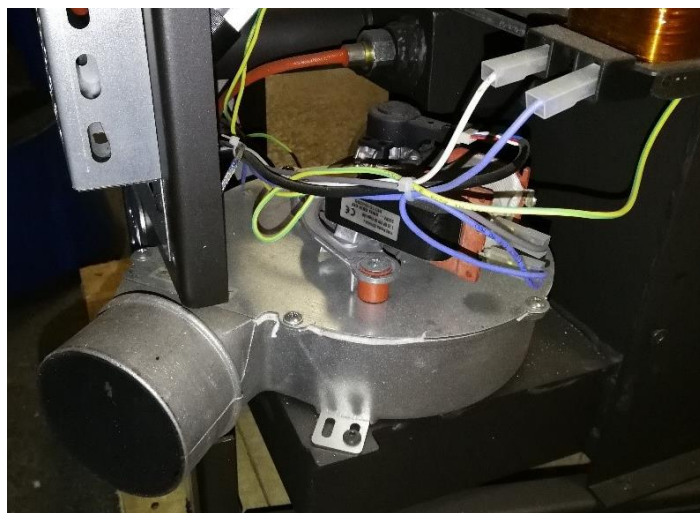
Room temperature sensor:

Measures the current room temperature. The cable is about 60 cm long and can be placed anywhere within that reach.



Exhaust fan:

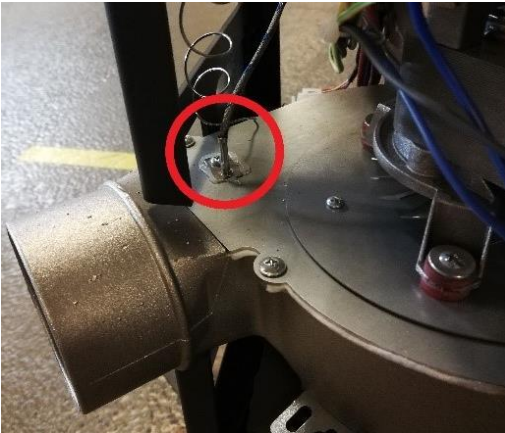
Extracts the smoke from the combustion chamber into the chimney. Creates negative pressure in the combustion chamber which assists the creation of draft and air supply for the combustion.



[For instructions on how to replace the exhaust fan, click here.](#)

Smoke temperature sensor:

Measures the current exhaust temperature.



Encoder:

Measures the speed of the exhaust fan.



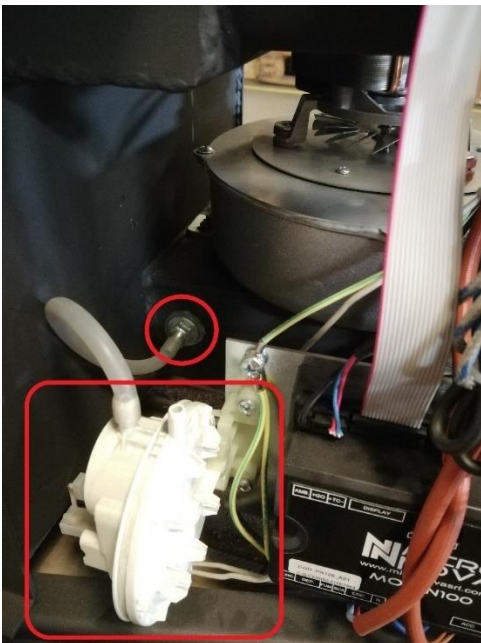
Safety thermostat:

Measures the temperature of the auger tube. Too high of a temperature will trigger an alarm and stop the stove.



Pressure switch:

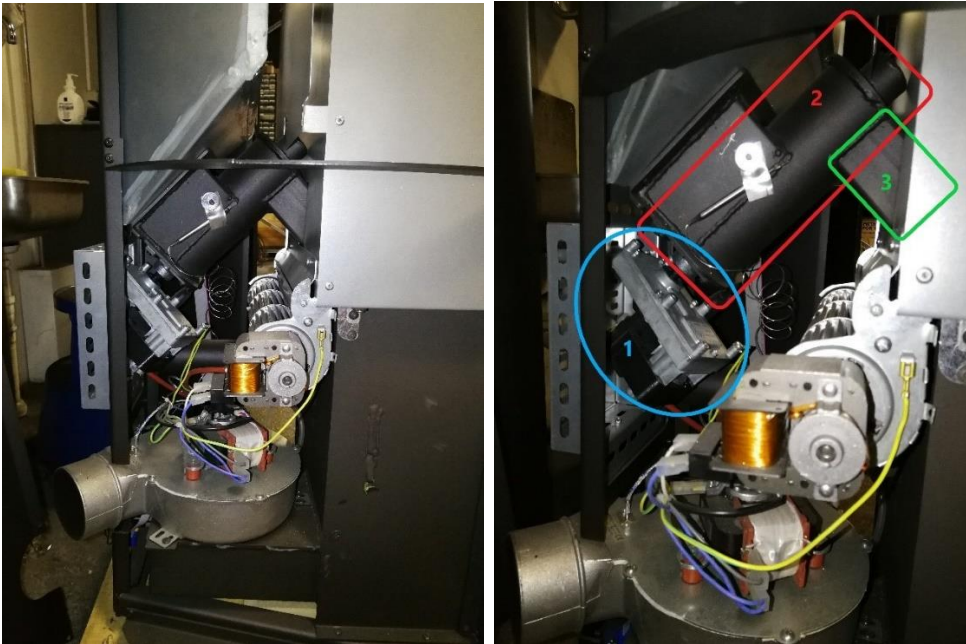
Measures the pressure inside the combustion chamber/right before the exhaust fan. A major change in pressure will trigger an alarm and stop the stove.



Auger and gear motor:

The auger moves the pellets from the pellet container to the top of the drop shaft, through which the pellets fall into the brazier in the combustion chamber.

1. Gear motor
2. Auger tube with auger
3. Drop shaft

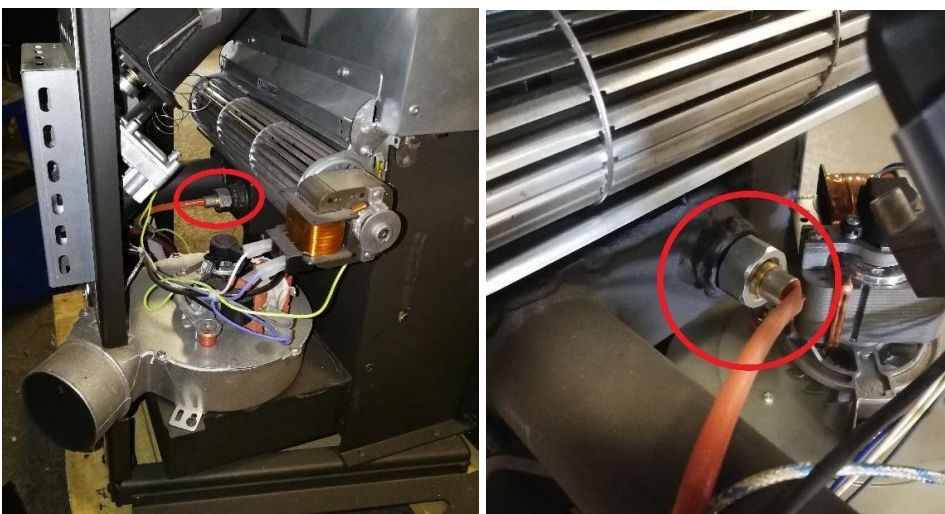


[For instructions on how to replace the auger, click here.](#)

[For instructions on how to replace the gear motor, click here.](#)

Ignitor:

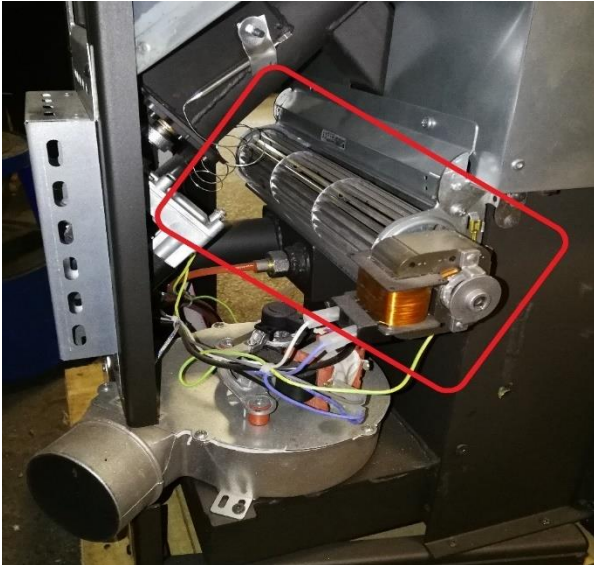
In the ignition phase, the ignitor heats up the air that flows directly into the brazier containing pellets, which ignites the pellets.



[For instructions on how to replace the ignitor, click here.](#)

Convection fan:

Blows the warm air into the room. At the same time, it cools down the stove and prevents the pellet container from becoming too hot.



[For instructions on how to replace the convection fan, click here.](#)

Wi-Fi module:

Is connected to the board through the serial cable, similar to the control panel cable, just with a blue stripe. Ensures the Wi-Fi connection and upload of data to the cloud.



Control panel:

Is used to adjust the settings and to view the status of the stove.

