

How to replace the external auger and gear motor on the Aduro P5 Series

Difficulty level: Difficult

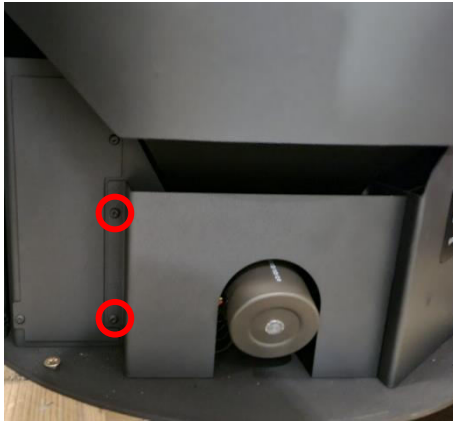
Time consumption: 45 minutes

Tools: TORX 20 screwdriver, 3mm Allen key

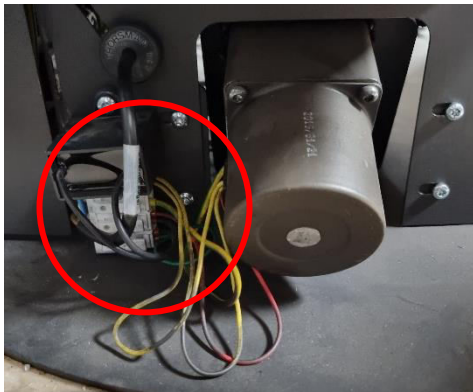
Components: [Gear engine external auger rmp 2,5 \(aduroshop.com\)](https://aduroshop.com), [Auger external incl bearing - SLIM \(aduroshop.com\)](https://aduroshop.com)

NB: All changes and adjustments must be conducted when the stove is cold and disconnected from the power supply.

1. The motor for the external auger is located in the bottom front of the stove, behind the lower door. To access the motor, remove the motor cover plate by unscrewing the two screws holding the plate with a TORX 20 screwdriver:



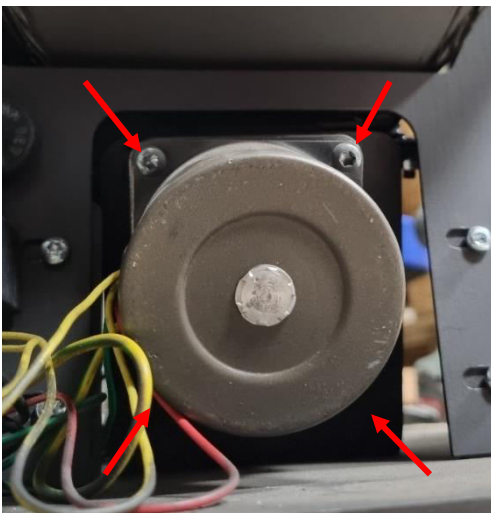
1. Disconnect the motor cables from the white terminal: Press and hold the locking buttons on the terminal, then gently pull the cables out:



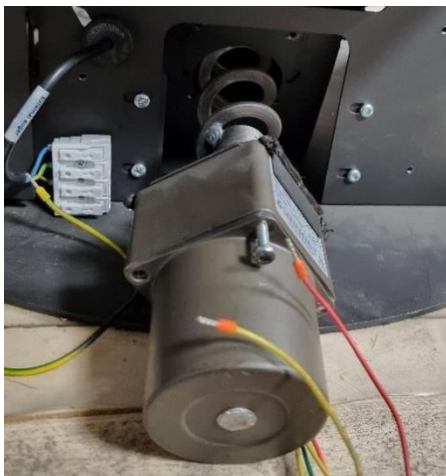
2. Unscrew the four screws on the stove's backplate and remove the backplate. Then remove the nut from the external auger thread, unscrew the two screws in the sides and remove the bearing:



3. Now, unscrew the four screws that mounts the motor to the stove chassis:



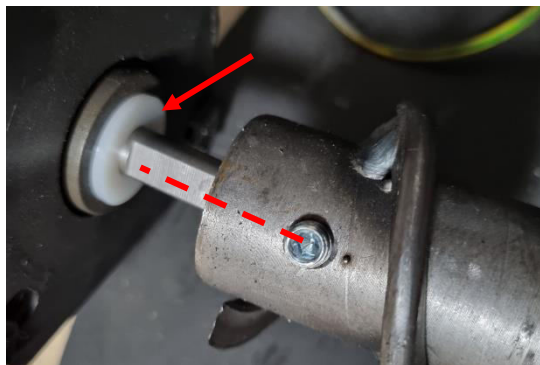
4. Pull the motor and auger out, and then separate the auger from the motor by unscrewing the pinion screw with a 3 mm Allen key:



5. Transfer the cover bracket from the old motor to the new one. The bracket can only fit one way, and the holes must be visible through the screw slits:



6. Replace the motor, auger, or both, and reassemble them. Make sure the pinion screw is aligned with the flat side of the motor axle, and that there is a nylon washer on the axle. Tighten the pinion screw with the Allen key:



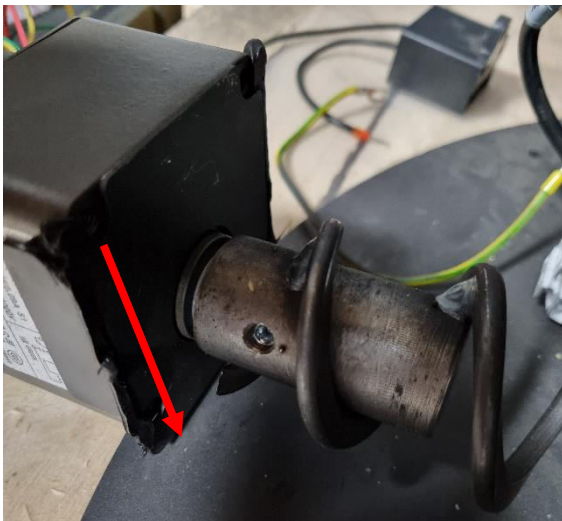
7. Push the auger, with the motor, as far into the pellet tube as possible. The check from the backside of the stove, that the threaded rod on the auger goes through the hole:



8. Center the threaded rod: Place the bearing onto the rod, then screw the bearing into the tube with the two screws. Screw the nut onto the threaded rod, but do not tighten it all the way yet:



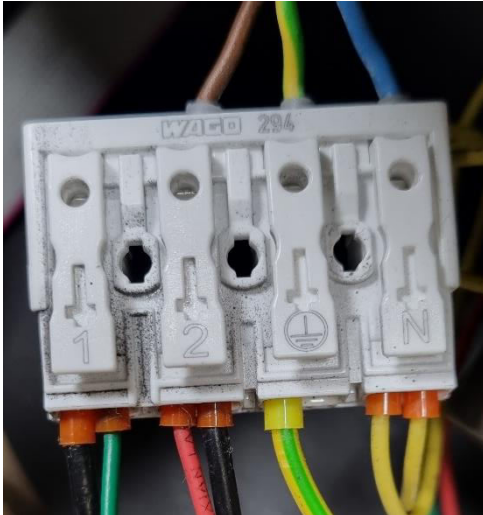
9. To mount the motor to the stove, the motor must be placed correctly: As the axle is not centered on the motor, the short side is placed downwards:



10. Rotate the motor (the round piece) to place the cables to the left so they can easily be connected to the terminal. Screw the motor back into the stove chassis with the four screws. Then you can tighten the nut on the threaded rod on the backside of the stove.



11. Reconnect the motor cables to the terminal as shown below:



12. Test the motor by starting an initial load on the remote or by performing an ignition via the app or on the stove's control panel. If the motor/auger turns clockwise the installation is a success – you can tell which way it rotates by looking at the nut, which will rotate in the same direction.

13. Remount the motor cover plate and the stove's backplate to complete the installation.

Troubleshooting

The motor/auger won't start turning:

- Check that the cables from the motor to the terminal are connected correctly.
- Check that the cables from the terminal to the control board are also connected and intact.
- Check that the power is turned on, and that the control board is getting power, indicated by the green LED on the bottom left corner on the control board.
- Loosen the nut on the threaded rod a little.
- Check that the auger is not blocked by pulling it out and inspecting it and the pellet tube.