

## How to replace the pressure switch on the Aduro P5 series

**Difficulty level:** Easy

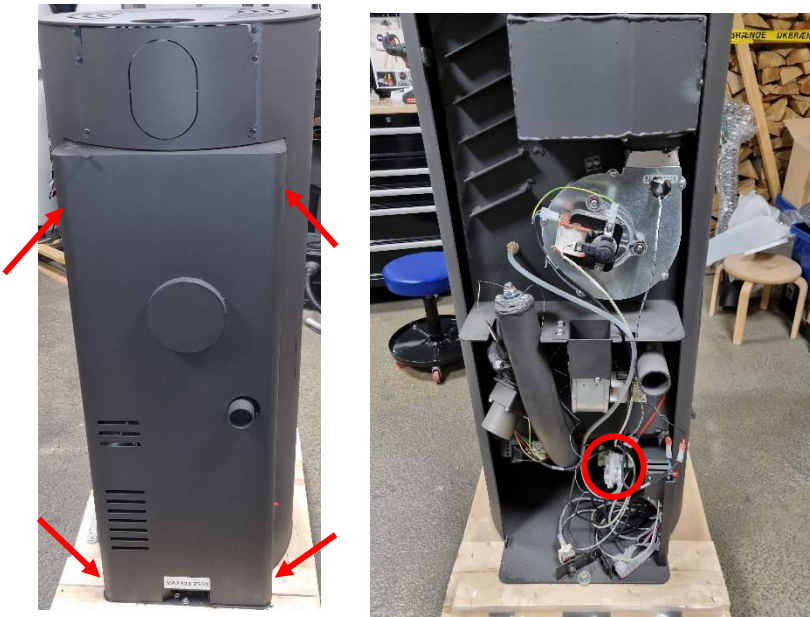
**Time consumption:** 15 minutes

**Tools:** TORX 20 screwdriver

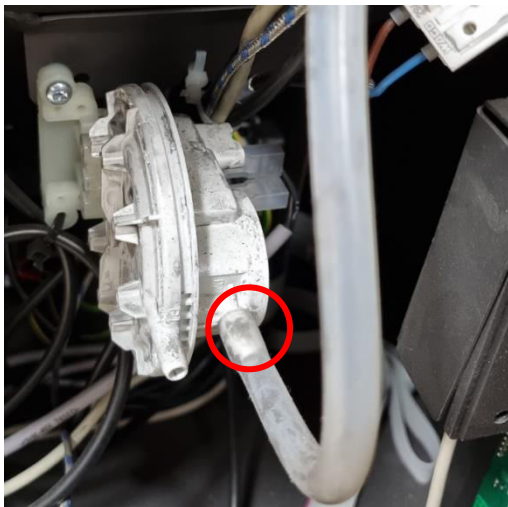
**Components:** [Pressure switch \(aduroshop.com\)](http://aduroshop.com)

NB: All changes and adjustments must be conducted when the stove is cold and disconnected from the power supply.

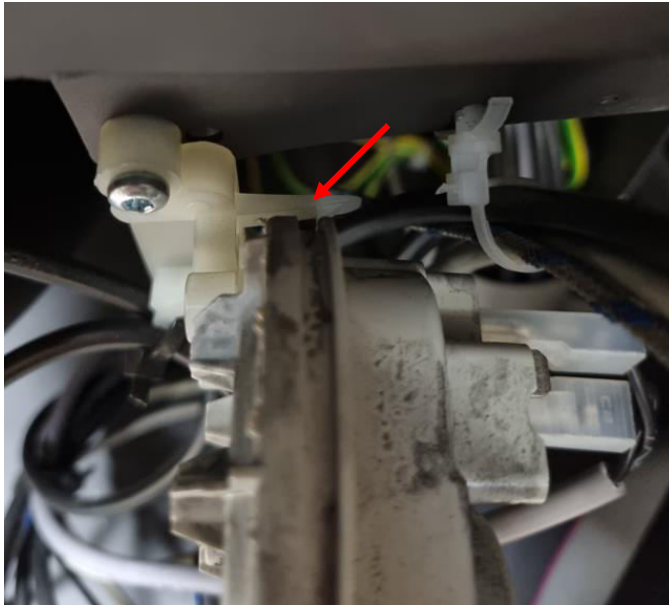
1. To access the pressure switch, remove the stove's backplate by removing the 4 screws:



2. Remove the rubber tube from the pressure switch:



3. Remove the pressure switch from the plastic clip that holds it in place by pressing the two plastic hooks:



4. Remove the cable connectors from the pressure switch pins:

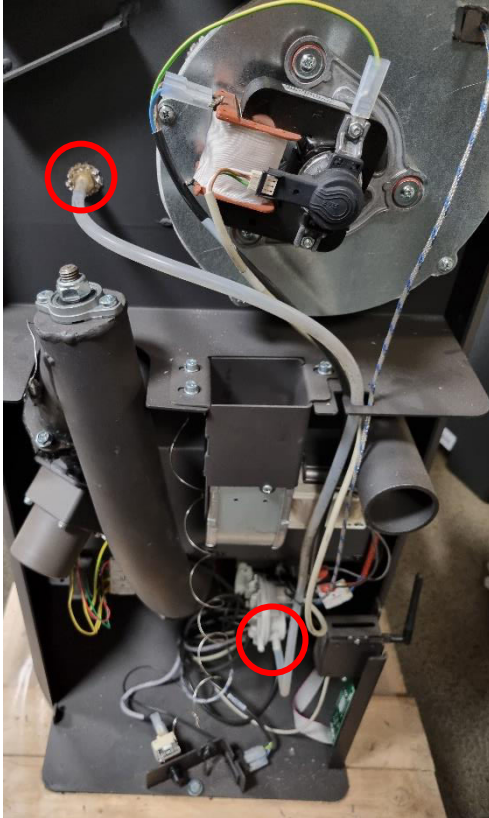


5. Reattach the cable connectors to the new pressure switch and push it back into the plastic holder, then attach the tube.
6. Check that the pressure switch is functioning correctly by igniting the stove to make sure no alarms show.
7. Remount the backplate with the four screws.

## Troubleshooting

If the pressure alarm “AL8” is still showing after changing the pressure switch, follow these steps:

1. Check that the other end of the rubber tube is connected to the pressure outlet on the stove, and that the tube does not have any leaks:



2. Check that the power switches are connected to the right inputs on the pressure switch. Also make sure that they are connected to the control board:

