

Replacement of ceramic ignitor on the Aduro P5 series

Difficulty level: Easy

Time consumption: 10 minutes

Tools: Screwdriver PH2

Components: [Ceramic ignitor \(aduroshop.com\)](http://aduroshop.com)

NB: All changes and adjustments must be conducted when the stove is cold and disconnected from the power supply.

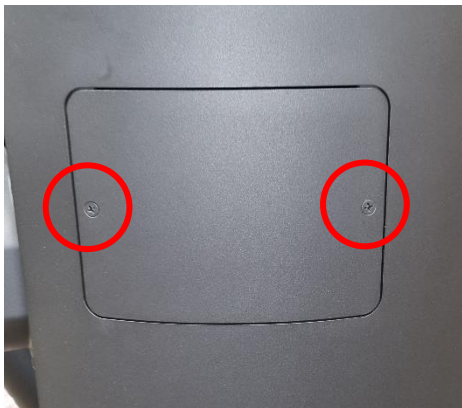
To check if the ceramic ignitor is working, try to turn on the stove without pellets in the auger. The small ignitor hole (marked with a red circle in the picture below) should light up with an orange glow within 3 minutes.



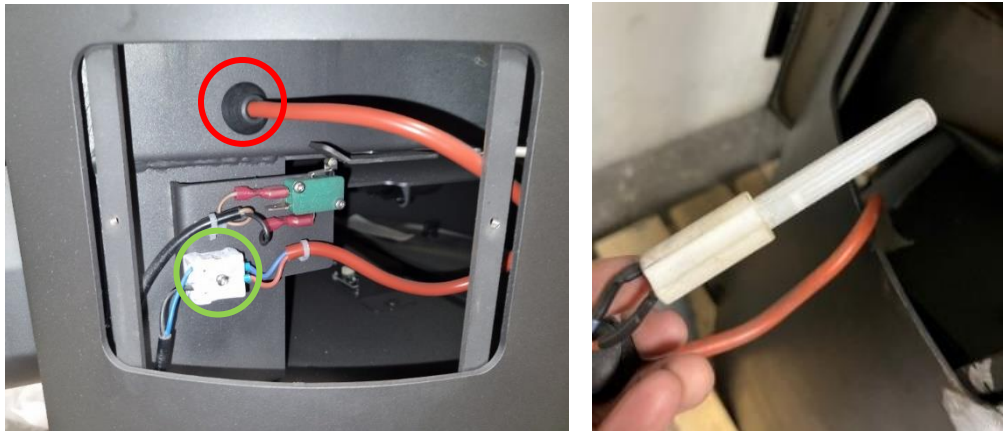
If the ceramic ignitor is not warming up, it is most likely faulty and needs to be replaced.

Replacing the ceramic ignitor

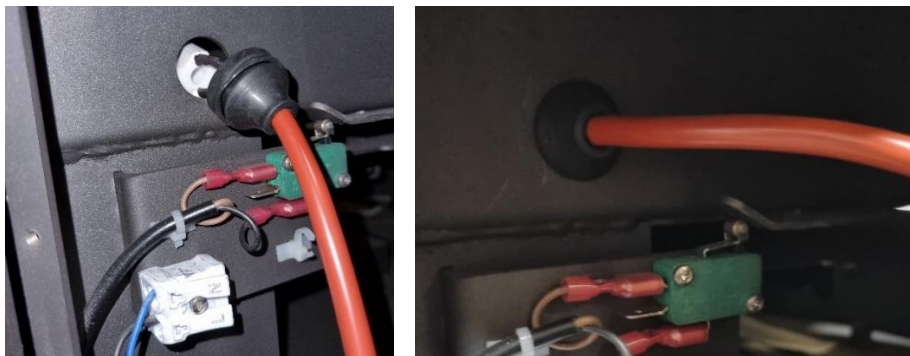
1. To access the ignitor, remove the cover plate on the side of the stove by unscrewing the two screws:



2. To remove the ceramic ignitor, release the two cables from the socket (marked with a green circle in the picture below) by pressing down on the buttons marked "N" & "L". Hereafter, pull the ignitor out by gently tugging on the black rubber seal and orange cable (marked with a red circle in the picture below).



3. Install the new ceramic ignitor. The ceramic ignitor is inserted into a small pipe inside the hole. Mount the rubber sealing and press the cable until the ceramic igniter is pressing against the top. Then pull the cable 5 mm backwards.



4. The ceramic ignitor can be aligned to the hole, by using a tiny round object that can be inserted into the hole and guide the ceramic ignitor into the right place:



- When the ceramic ignitor has been placed properly, connect the cables to the socket (the blue cable in one of the “N” holes and the red/brown cable in one of the “L” holes):



The ceramic ignitor is now installed. Check the function of the ceramic ignitor by starting an ignition and check that the ignitor lights up. If the stove functions as it should, remount the cover plate on the side of the stove.

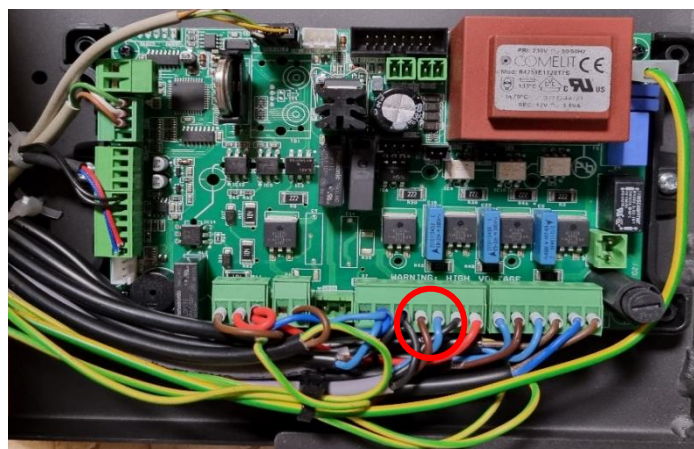
Troubleshooting

The pellets do not ignite / Alarm “No ignition”:

- To make sure that there is a sufficient passage from the ceramic ignitor to the brazier, it is important to clean the small hole for the ignitor



- Check that the cables from the ignitor are inserted into the right slot in the power socket.
- Check that the cables from the ignitor power socket to the control board are not damaged.
- Check that the cables from the ignitor power socket are connected in the right slot on the control board. The control board is accessed from the front of the stove. Unscrew the two screws and gently pull out the board:



- If this doesn't solve the problem, try exchanging the power socket and cables, and lastly try to change the control board.

The ignitor works, but no fire:

Check the draft and exhaust fan to make sure enough air is supplied.