

## Replacement of the smoke exhaust fan on the Aduro P5 series

**Difficulty level:** Intermediate

**Time consumption:** 30 minutes

**Tools:** TORX 15 screwdriver, PH2 screwdriver, Allen key 4 mm

**Components:** [Smoke exhaust fan \(aduroshop.com\)](http://aduroshop.com), high temperature resistant silicone

**NB:** All changes and adjustments must be conducted when the stove is cold and disconnected from the power supply.

### Replacing the exhaust fan

1. To access the smoke exhaust fan, remove the backplate of the stove by removing the 4 screws:



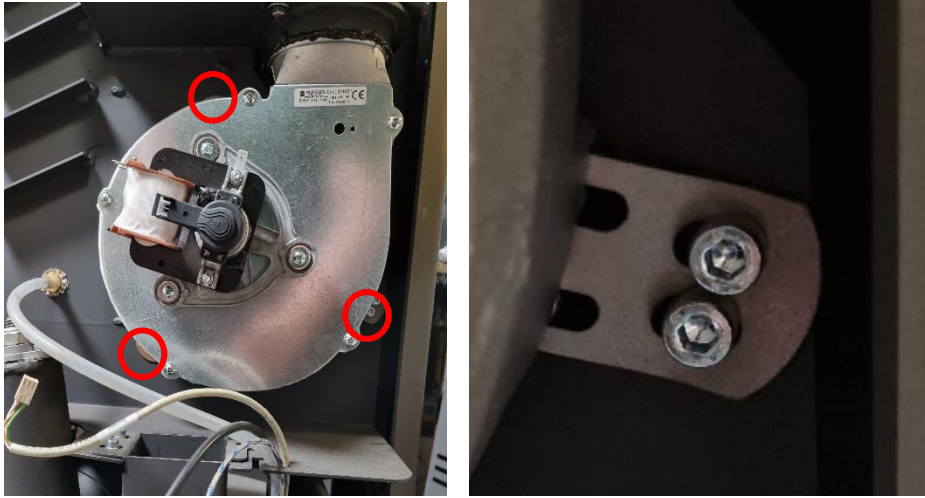
2. Dismount the sensor from the smoke exhaust fan by opening the metal cover, then pull out the cable. Remove the felt, unscrew the PH screw and then remove the sensor and plate:



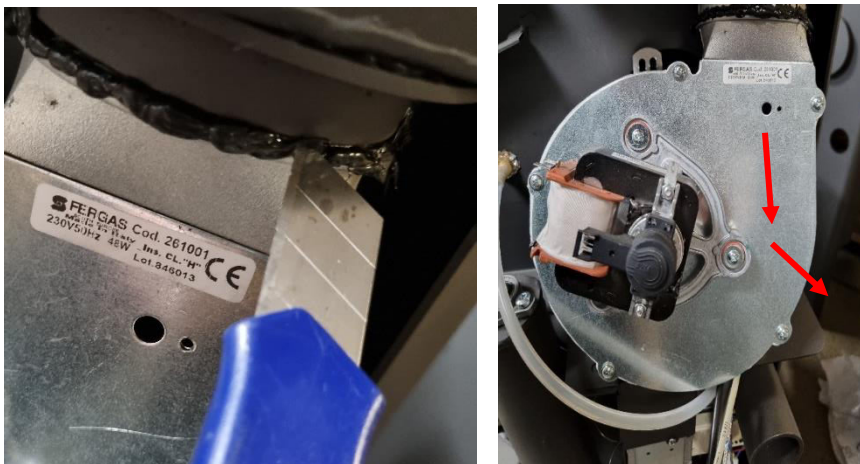
3. Unplug the three connectors from the smoke exhaust fan:



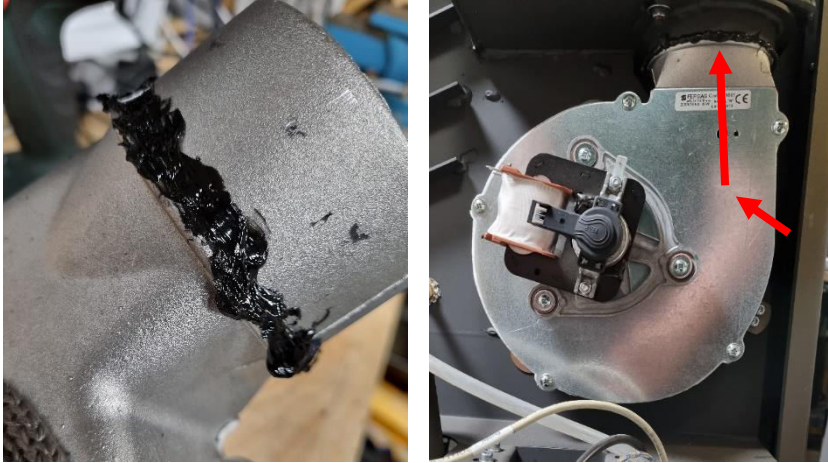
4. Unscrew the 6 screws in the three brackets that attaches the smoke exhaust fan to the stove:



5. Remove the smoke exhaust fan by first cutting the silicone around the pipe, then pull the smoke exhaust fan down and pull it outwards:



6. Before mounting the new smoke exhaust fan, be sure to apply a line of high temperature resistant silicone around the collar of the exhaust pipe on the smoke exhaust fan. Then reinsert the smoke exhaust fan:



7. Before remounting the sensor, be sure to apply a layer of high temperature resistant silicone to the back of the cover plate. Then reinsert and screw in the screw, insert the sensor and cover with felt:



8. Remount the three connectors to the new smoke exhaust fan:





9. Before remounting the backplate, we recommend performing an ignition to test that the new smoke exhaust fan is working. If working, remount the backplate.

## Troubleshooting

### The smoke exhaust fan is not spinning/ Alarm 4 “Fan Failure”:

- Check that all necessary cables are connected between the smoke exhaust fan and the control board and that they are not damaged.
- Check that the encoder is properly connected to the motor, and that the pins for the cable are not damaged.
- Change the encoder on the motor: [Encoder for exhaust fan \(aduroshop.com\)](https://aduroshop.com).
- Connect a new fan, to see if this fixes the issue.
- Check the pins and connectors on the control board and check the board for burnout marks.

**Keywords:** smoke, exhaust, fan, exhaust fan, encoder, alarm, 4, fan failure, failure