

Replacement of the gear motor on Aduro P1 and P4 stoves

Difficulty level: Intermediate

Time consumption: 30 minutes

Tools: TORX 25 screwdriver, Allen key 5 mm, PH2 screwdriver

Components: [Auger motor](#)

NB: All changes and adjustments must be conducted when the stove is cold and disconnected from the power supply.

If the gear motor is worn or broken it must be replaced. The motor is accessed from the back of the stove.

1. Before it can be accessed, the cover plate (and left side plate on P1) needs to be dismantled. This can be done by unscrewing the screws (marked with red below):

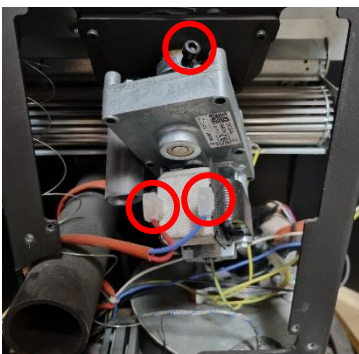
Aduro P1



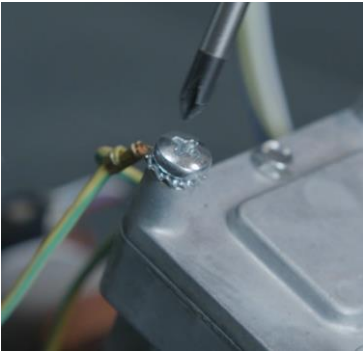
Aduro P4



2. Remove the two power connectors to the motor by tugging on the connectors. Then unscrew the dark screw that connects the motor axle to the auger and pull the motor out:



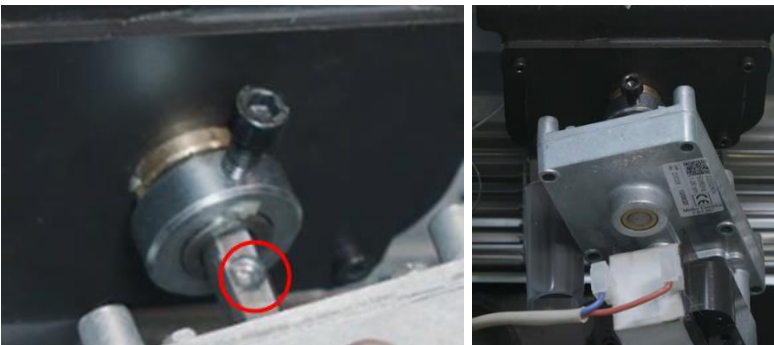
3. Unscrew the ground connection on the motor:



4. Transfer the ground connection to the replacement motor:



5. Connect the motor to the auger by screwing the dark screw into place. Make sure that the screw aligns with the hole in the motor axle. Then remount the connectors and cables:



6. Perform an initial load or an ignition and look for pellets falling down into the brazier of the stove to make sure, the motor works.

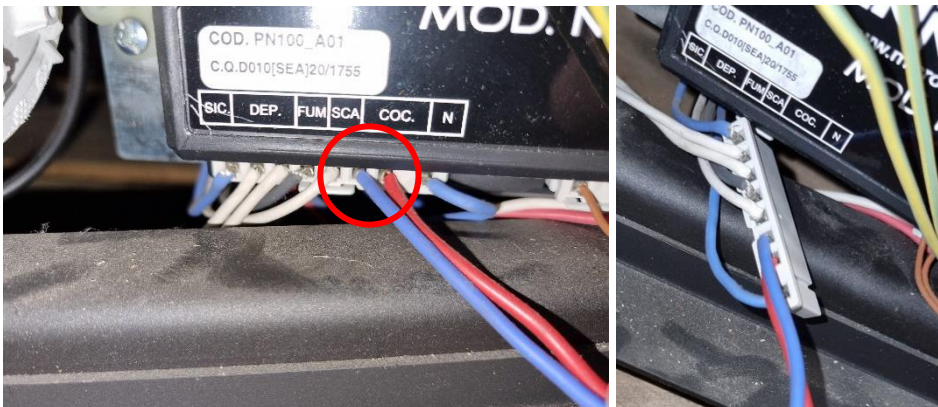
7. Remount the cover plates on the stove.

Cabling:

If the gear motor does not work, check that the connections to the control board and ground are intact. Seen from the back, the control board and ground are located on the lower left side of the stove.



The motor cable is connected to the “coc.” outlet on the micro nova N100 board in the stove. It is connected through a gathered connector:



The ground connection is right next to the control board on the left side:

