

Replacement of the auger on Aduro P1 and P4 pellet stoves

Difficulty: Intermediate

Time consumption: 30 minutes

Tools: TORX 25 screwdriver, Allen key 5 mm, Allen key 3 mm, Utility Knife

NB: All changes and adjustments must be conducted when the stove is cold and disconnected from the power supply.

If the auger is worn or broken it most likely needs to be replaced. Please follow these steps to replace it:

1. Empty the pellet container.
2. Dismount the cover plate by unscrewing the screws (on P1 it is also necessary to dismount the side plates):

P1 series



P4 series



3. Remove the connectors attached to the gear motor by tugging on them. Then unscrew the dark screw that connects the gear motor axle to the auger – but only enough to remove the gear motor:



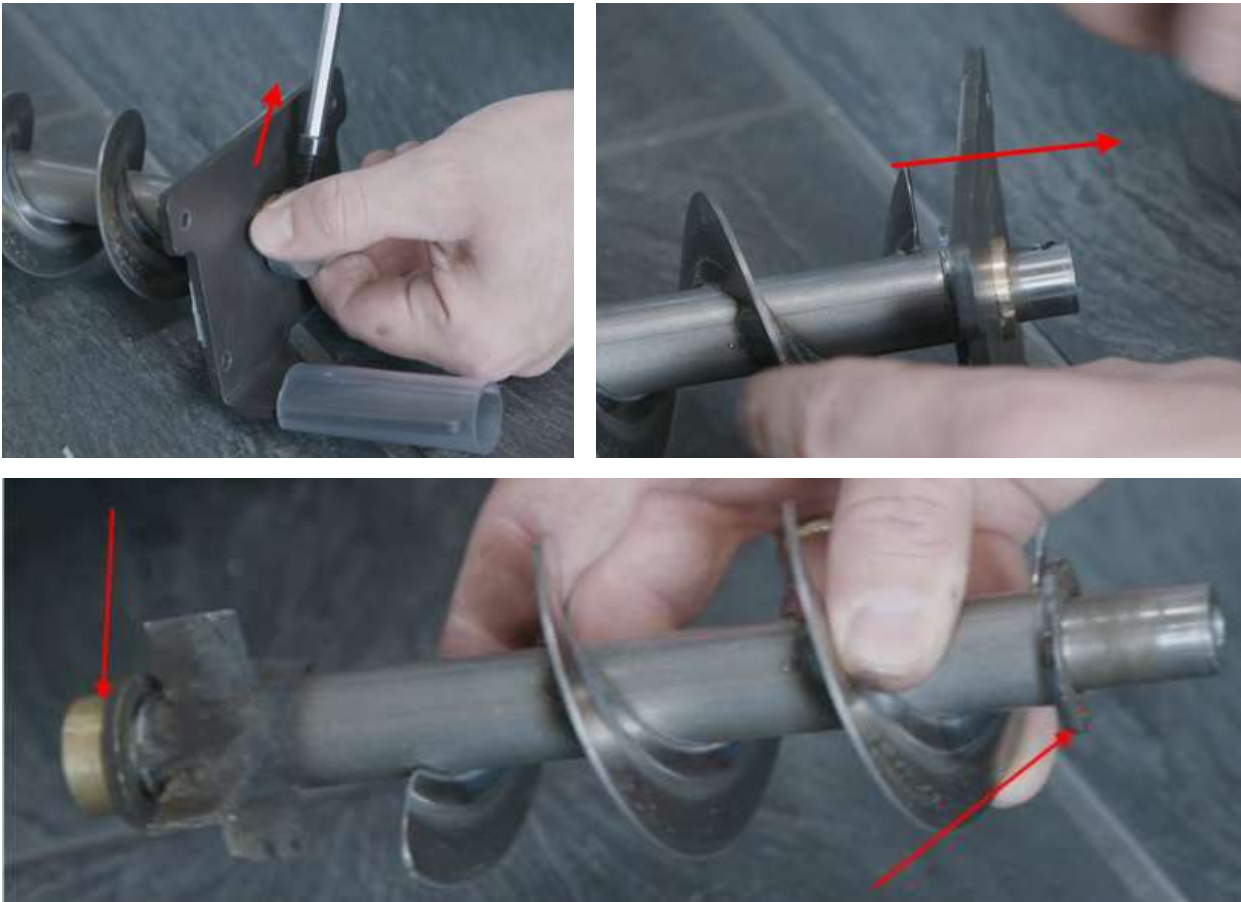
4. Before removing the plate that holds the auger, be sure to place something underneath (e.g., a plastic bag) to catch any remaining pellets. Unscrew the four screws and cut the glue with a knife:



5. Pull out the plate and the auger:



6. Dismount all parts from the auger (plate, brass bushings, metal washer):



7. Attach the parts to the new auger and reinsert the auger into the stove's pellet tube. Then reattach the plate with the screws:



8. Reattach the gear motor. Please make sure that the dark screw aligns with the hole in the axle. Now screw the screw in place:



9. Reattach the connectors to the gear motor:



10. Remount the cover plate.

11. Perform an "Initial load" of pellets on the stove's control panel before igniting the stove.

Keywords: P1, P4, auger, replace, snail, pellet,