

Replacement of the convection fan on Aduro P4

Difficulty level: Intermediate

Time consumption: 20 minutes

Tools: TORX 25 screwdriver, PH2 screwdriver

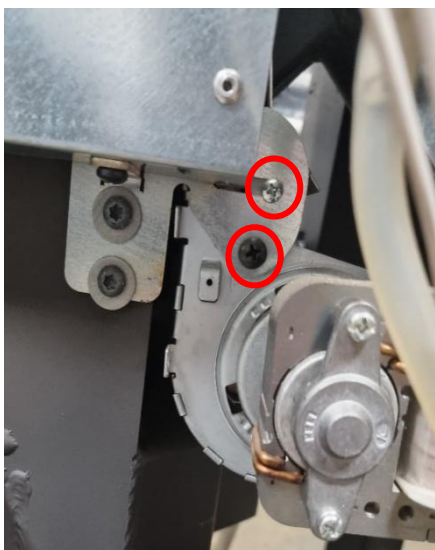
Components: [Convection fan](#)

NB: All changes and adjustments must be conducted when the stove is cold and disconnected from the power supply.

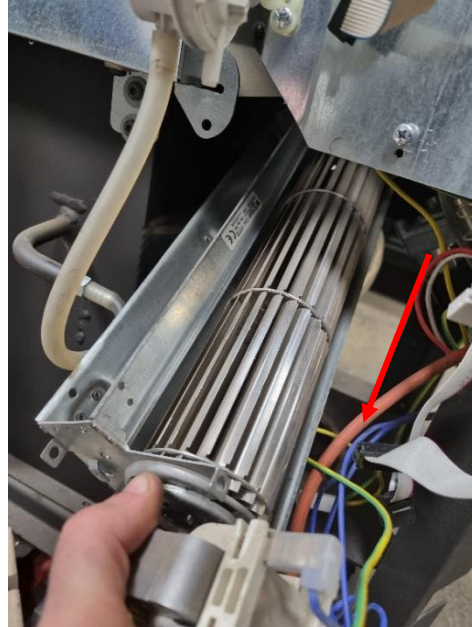
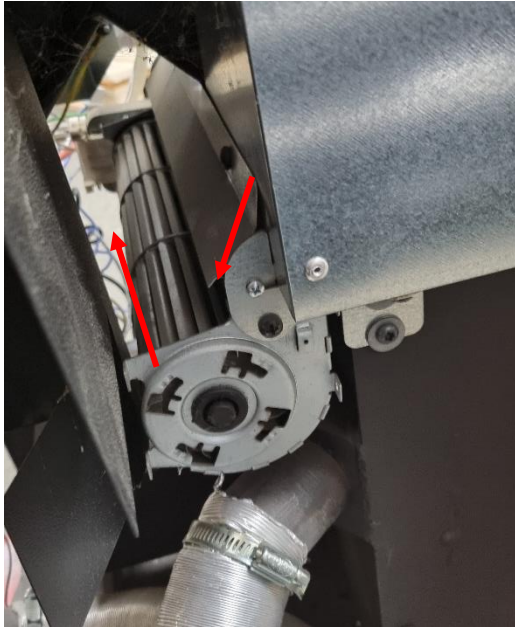
1. To gain access to the convection fan, please remove the side panels and the lower back panel of the stove:



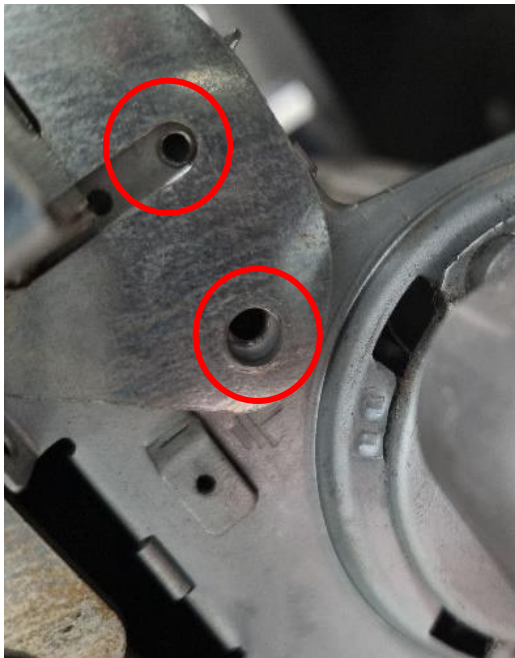
2. Remove the four screws (two on each side), which holds the fan in place:



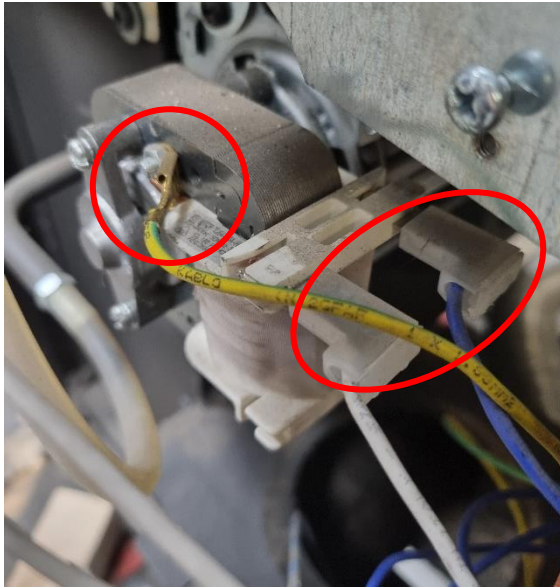
3. Disconnect the three cables from the fan.
4. Pull the fan downwards to clear it from the bracket, pull it out of the stove towards the side where the cables have been connected to the fan:



5. Remount the new fan. Make sure to align the holes in the bracket with the fan, and mount the four screws (two on each side):



6. Reattach the cables to the new fan:



7. Check the function of the new fan by performing an ignition while keeping an eye on the fan. If the fan turns on/starts spinning, the installation is successful.
8. Remount the side panels and the lower back panel of the stove.

Troubleshooting

If the fan does not spin:

- Make sure the power is turned on.
- Check that there is no damage to the wires.
- Make sure both cables are connected to both the fan and the control board.
- The fan might need more power. Try setting the fan speed a bit higher than the recommended minimum via the service menu on your display.