

Aduro Hybrid cable overview

Table of Contents

Overview of connections	2
Power cable	2
Wires gear motor internal auger	3
Wires gear motor external auger	4
Wires for air supply fan	4
Wires for igniter	5
Shaft temperature sensor and room temperature sensor	5
Smoke temperature sensor	6
CO-sensor	6
Stove display/ control panel	7
Door switch	7
Pellet spigot switch.....	8

Overview of connections

An electrical diagram of the control board and the connections to the components can be found here:

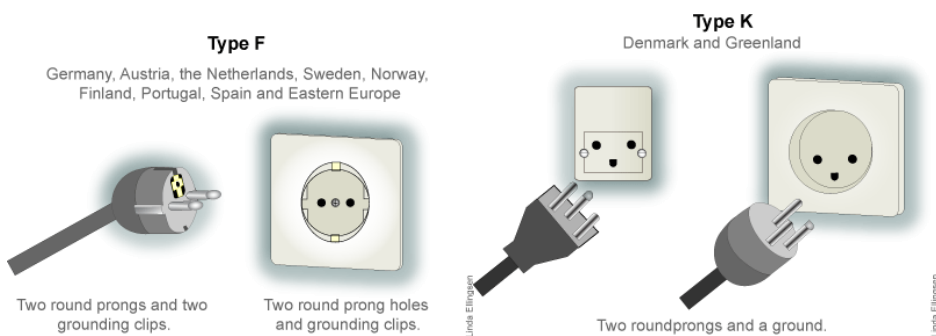
[Wirediagram Hybrid control board - V13-7.pdf \(adurofire.com\)](#)

An overview is also provided here:



Power cable

The Hybrid stove is delivered with 2 power cables a type F and type K.

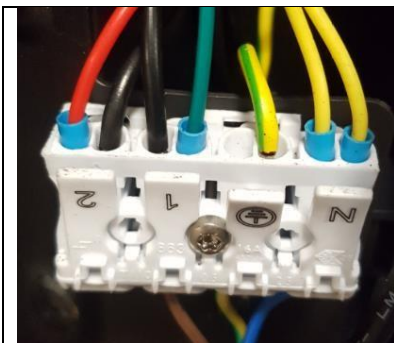


These are inserted into a socket on the back of the stove. The socket is directly connected to the control board.

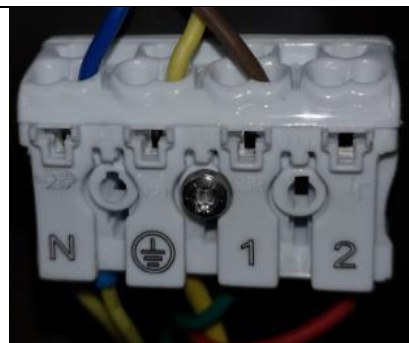
As described in the manual, the hybrid must always be connected to a grounded plug to prevent electrical accidents and injuries.

Wires gear motor internal auger

The wires for the gear motors are wired to a harness that is connected to the board. A condenser is also wired to the harness.



Seen from the top



Seen from the bottom.
These cables cannot be removed.

Wire color	Cable function
Red	Power cable
Green	Power cable
Black	Condenser cables
Green/Yellow	Ground cable
Yellow	Two yellow cables, neutral wires

Wires gear motor external auger



The wires for the external auger gear motor are placed very similar to the internal motor. The green and red wire has just been switched around.



Wires for air supply fan

The fan is powered by the AC power supply from the board, so it is not directionally controlled by the power. Therefore, it does not matter what cable goes into what port.



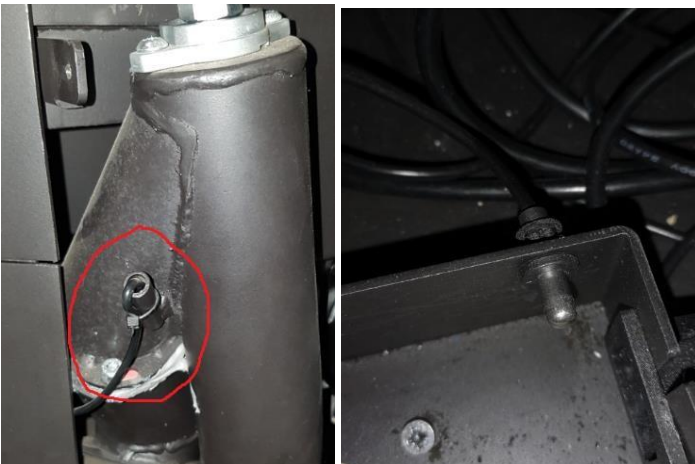
Wires for igniter

The igniter is powered by the AC power supply from the board. Therefore, it does not matter what cable goes into what port. Though in general the blue goes into L and the brown into N.



Shaft temperature sensor and room temperature sensor

The same type of sensor is used for both positions. They are directly connected to the control board.



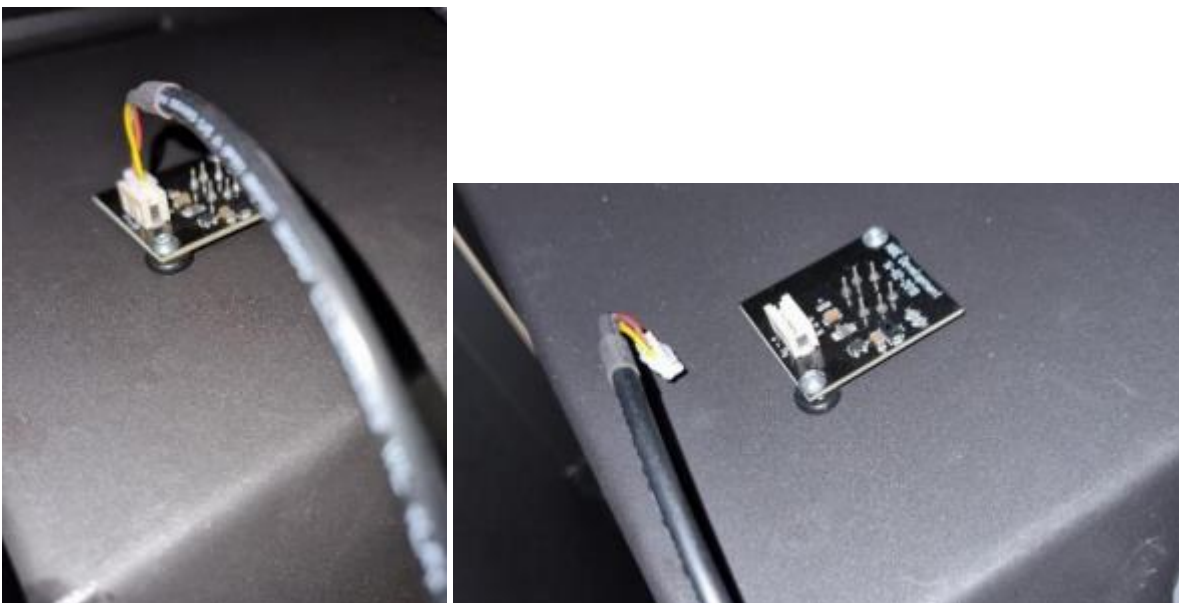
Smoke temperature sensor

The smoke temperature sensor is placed on the top of the stove and is connected directly to the control board.



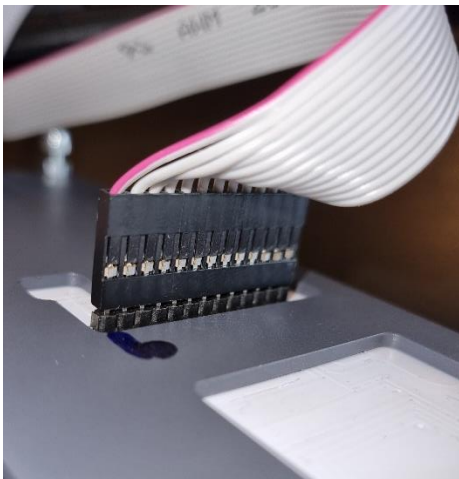
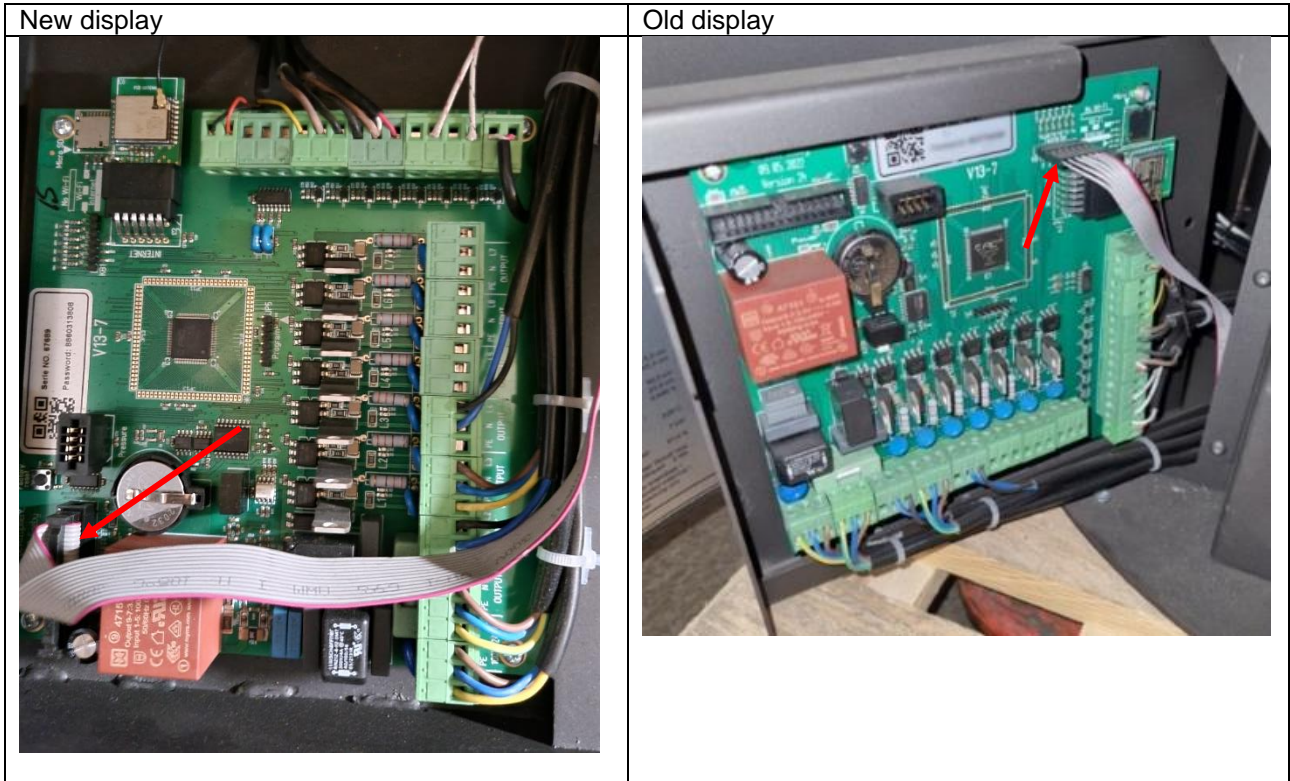
CO-sensor

The CO-sensor has a built-in terminal, that the cable clicks into. The cable is directly connected to the control board.



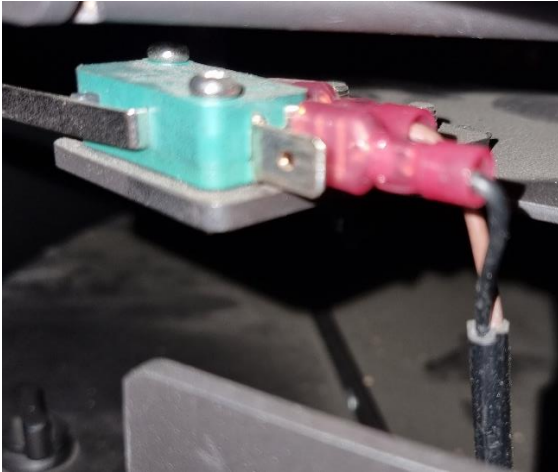
Stove display/ control panel

The stove display is connected directly to the board. The new and old display each have their own port, that they are connected to. The display and board are connected with a detachable cable:



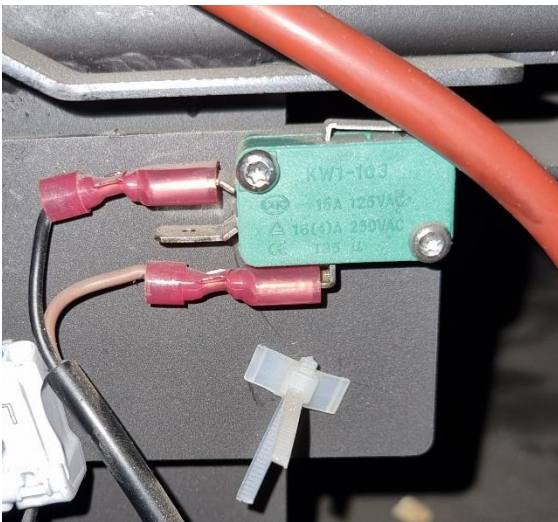
Door switch

Wires are attached to the shown terminals; the other ends are directly connected to the control board.



Pellet spigot switch

Wires are attached to the shown terminals; the other ends are directly connected to the control board.



Keywords: cable, overview, hybrid, wire