

## How to replace the hybrid stove's control panel

**Difficulty level:** Easy

**Time consumption:** 10 minutes

**Tools:** TORX 15 screwdriver, small flathead screwdriver/knife

**Components:** [Control panel](#)

**NB: All changes and adjustments must be conducted when the stove is cold and disconnected from the power supply.**

There are two ways to replace the control panel on the hybrid stove:

### Method 1: Replacing the old control panel

1. To access the hybrid stove's control panel, open the lower front door:



2. The control panel is glued onto the surface of a cover plate (on some newer models the control panel is placed in a recess in the plate). Take note of the orientation of the cable connected to the control panel. To remove the control panel, use a small flathead screwdriver/a Stanley knife to lift the control panel off the surface. Be careful! This might break the control panel.



3. Connect the cable from the old control panel to the new one, connect the stove to power and test the functionality of both buttons and the LED's before mounting the new control panel.



4. If the control panel functions correctly, disconnect the power to the stove, and the cable to the control panel. Peel off the sticker covering the glue on the backside of the control panel. Reconnect the cable and place the control panel where the old one sat.



5. The control panel has now been replaced.

## Method 2: Replacing the old control panel and cable

If the cable is missing/falls off when removing the control panel or if the cable needs to be replaced, this needs to be done behind the cover plate.

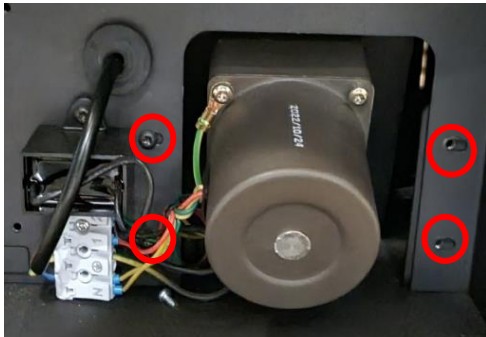
1. Dismount the first cover plate by unscrewing the 2 screws.



2. Unscrew the 2 screws holding the control board in place, and gently pull out the board on its plate without damaging the cables.



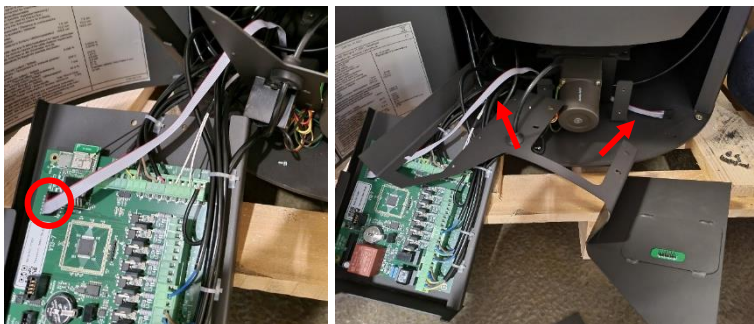
3. Unscrew the 4 screws holding the cover plate (see picture). It might also be necessary to remove some of the cables going to the motor.



4. Pull out the cover plate by pulling forward on the bottom of the plate.



5. Before moving the flat cable, take note of its orientation (see red mark on the cable) to place it the same way on the control board and the new control panel. Replace the cable going from the control board to the control panel with the new cable. The cable needs to be guided behind the motor.



6. The control panel is glued onto the surface of a cover plate (on some newer models the control panel is placed in a recess in the plate). To remove the control panel, use a small flathead screwdriver to lift the control panel off the surface. Be careful! This might break the control panel.



7. Connect the cable to the new control panel. Connect the stove to power and test functionality of both buttons and the LED's.



8. If the control panel functions correctly, disconnect the power to the stove and the cable to the control panel. Peel off the sticker covering the glue on the backside of the control panel. Reconnect the cable and place the new control panel where the old one sat.



9. Remount the cover plate, the control board and then the motor cover plate.  
10. The cable and control panel have now been replaced.

### Troubleshooting:

The control panel won't function or/and is flickering:

- Check there is no metal-to-metal contact between the control panel and the chassis. Cover with electric tape if any contact is found.
- Check for other loose connections touching the chassis. Cover with electric tape if any are found.
- Check that the control panel is connected to the control board.