

Replacement of door switch on Aduro Hybrid stoves

Difficulty level: easy

Time consumption: 20 min

Tools/components: TORX 10 screwdriver, 8 mm wrench, [door switch \(with long arm\)](#)

PLEASE NOTICE: All changes/adjustments/tests must be conducted when the stove is cold and unplugged.

How to replace the door switch

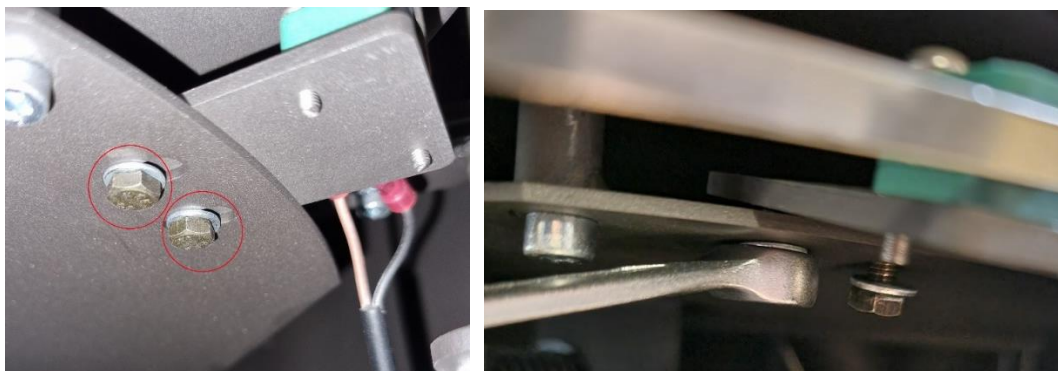
The door switch is a safety measure which detects whether the door to the combustion chamber is open or not. If the door switch is broken or worn, it is necessary to replace it.

The door switch is located under the combustion chamber behind the bottom door:

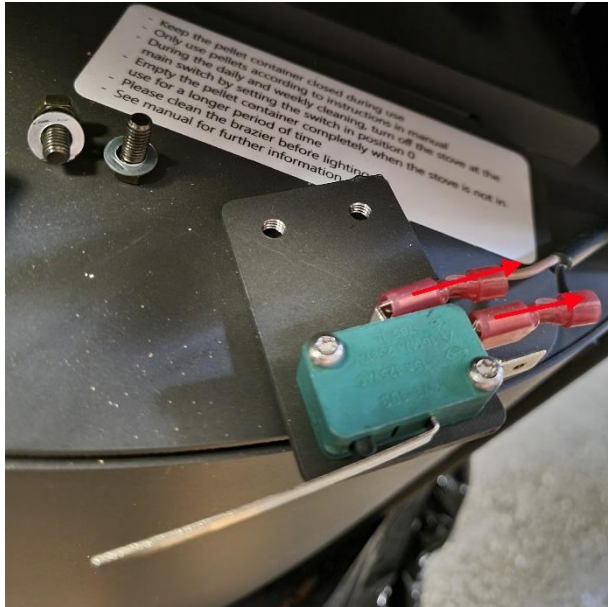


Follow these instructions to replace the door switch:

1. To dismantle the door switch and the bracket to which the door switch is attached, unscrew the two screws holding the bracket in place:



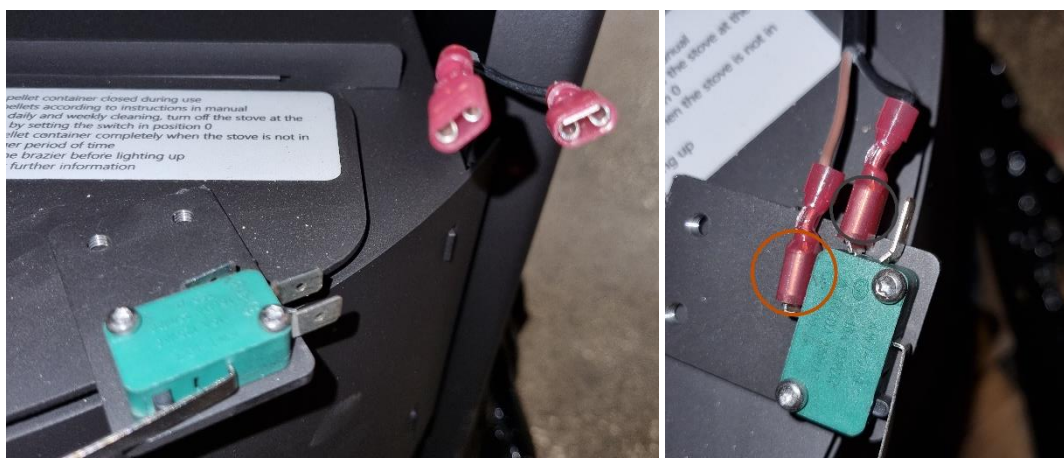
2. Disconnect the cables by gently tugging the connectors:



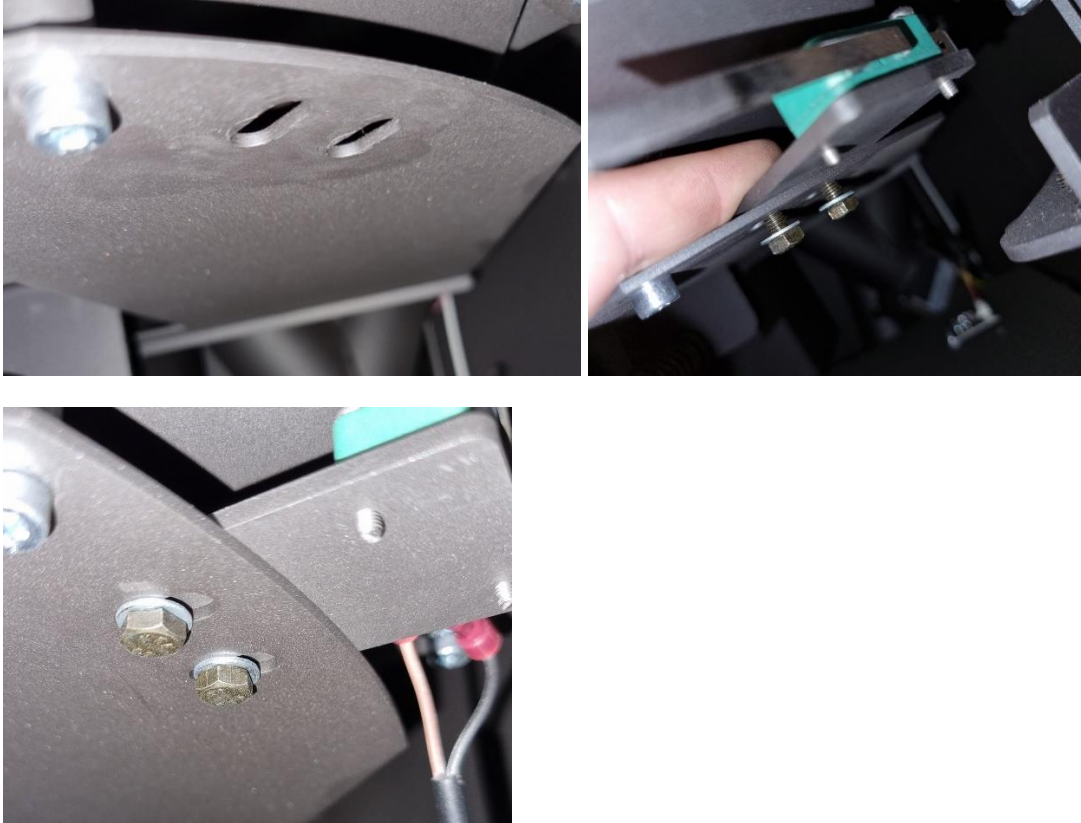
3. Unscrew the two screws to dismount the door switch from the bracket. Remove the old door switch and place the new door switch on the bracket. Screw the two screws back in place:



4. Reconnect the cables to the door switch:



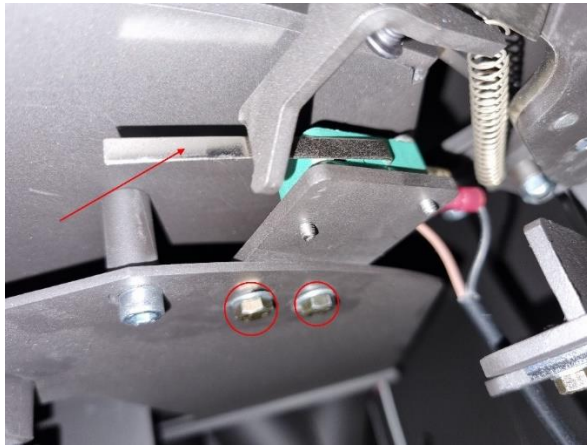
5. You can now remount the bracket with the door switch and the cables attached. Use your fingers to mount the screws. Please notice that the position of the bracket must still be adjustable. Place the bracket above the mounting plate in the stove, and mount the screws through the holes from underneath:



6. The position of the door switch needs to be adjusted to make sure it is placed correctly. Otherwise, it won't register if the door closes and opens. Pull the door switch as far out as possible and close the door:



7. Gently pull the door switch towards the door until the arm of the switch makes contact with the door and clicks. Hold it in place here, while tightening the screws:



8. Turn on the stove and make sure that the door switch registers the opening and closing of the door. This can be seen in the Aduro Hybrid app or on the stove's display.

Keywords: door switch, door, switch, electrical, replace, hybrid