

Replacing the room temperature sensor on Aduro Hybrid

Difficulty level: Easy

Time consumption: 15 minutes

Tools: TORX 15 screwdriver, 2 mm flathead screwdriver

Components: [Temperature sensor](#)

How to replace the room temperature sensor

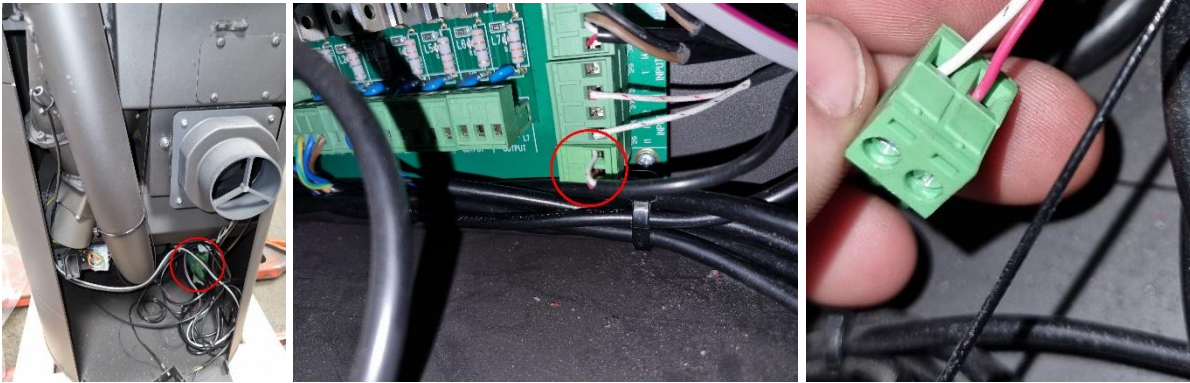
The room temperature sensor is placed at the bottom back of the hybrid stove. To access it properly, the backplate must be removed. This can be done by unscrewing the 4 screws that hold the plate:



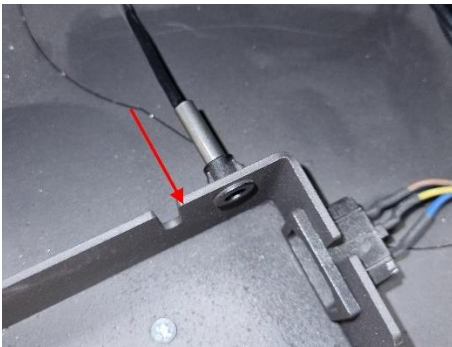
To remove the sensor from the plastic holder, you must press/pull on the metal casing:



The old sensor must be replaced by the new one on the control board. The control board is located at the bottom right inside of the stove. Pull the connector, not the cable. Replace the old cables with the cables of the new sensor, and reinsert the connector into the control board:



The metal end of the sensor can now be inserted into the plastic holder:



The room temperature sensor has now been replaced. Reinstall the backplate with the four screws to complete the installation.

Keywords: room temperature, sensor, electrical, replace, change, Aduro hybrid