

## Replacement of the control board on Aduro Hybrid stoves

**Difficulty:** Intermediate

**Time consumption:** 45 minutes

**Tools:** TORX 15 screwdriver, PH2 Screwdriver, cable ties (Optional)

**Components:** [Control board](#)

**NB: All changes and adjustments must be conducted when the stove is cold and disconnected from the power supply.**

### Checking the function of the control board

To check the function of the control board and whether it needs to be replaced, it is important to make sure that the cables are placed and attached correctly.

Try activating different functions like the augers, fan, and ignitor, to see if the lights on the board change. If not, the board must be replaced.



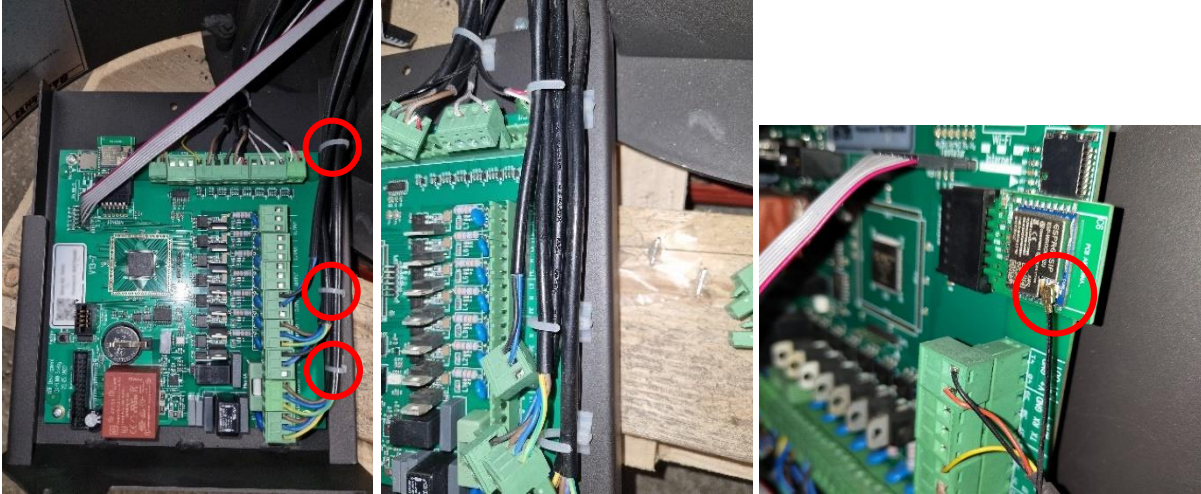
### Replacing the control board

It is important that the control board is handled with care, and that it is not exposed to static electricity when being replaced. To replace the control board, open the stove's lower door and unscrew the plate on the lower left side. Gently pull out the board while making sure not to damage the board and cables:



Place the board with the bottom on the floor. Make sure to take a picture or label each cable to make sure they go back to the right slot when replacing the board.

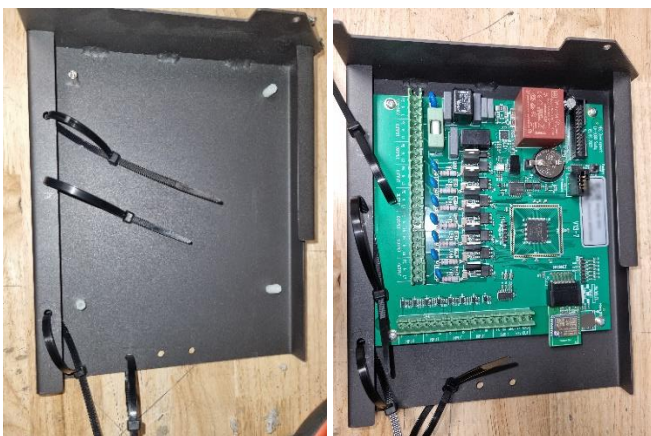
Cut the cable ties and unplug the cables by tugging on the green connectors. Be very careful when removing the Wi-Fi cable (shown in picture 3 below), as this is very brittle:



Unscrew the four screws (marked in the picture below), remove the board from the metal plate, and replace it with the new board:



If you have cable ties in the same size as the white plastic holders, new cable ties can be inserted into these and tightened around the cables. If not, the plastic holders can be removed and replaced by cable ties in another size:



You can insert the cables into the new board. The cables must be inserted into the same slots as on the old board as shown below:



When all cables have been reinserted correctly, test that the stove can turn on again, before tightening the cable ties. Reinsert the board into the stove very gently, while making sure not to damage the board and cables.

The new board comes with a new Wi-Fi module. Therefore, the stove must be reconnected to Wi-Fi and the app must be reconnected to the new board.

A new serial number and password are associated with the new board. Please use these when connecting:



You should also replace the sticker on the inside of the stove's lower front door with the new one.